

GRANT APPROVALS

24



COMMUNITY DEVELOPMENT GRANTS

DOLLAR AMOUNT APPROVED IN 2024

American Cabaret Theatre Inc. (The Cabaret)

Indianapolis, IN

General operating support 150,000

American National Red Cross (American Red Cross)

Washington, DC

Capacity building for Services to the Armed Forces program 10,000,000

Disaster relief 5,000,000

American Pianists Association, Inc.

Indianapolis, IN

Comprehensive branding and marketing efforts 50,000

Armed Services YMCA of the USA

Woodbridge, VA

Capacity building 3,000,000

Arts Council of Indianapolis Inc. (Indy Arts Council)

Indianapolis, IN

Art & Soul 2025 75,000

General operating support 300,000

Support for leadership transition 50,000

The Aspen Institute, Inc. (Aspen Institute)

Washington, DC

Support for Weave: The Social Fabric Project 22,400,000

Aspire Indiana Health

Noblesville, IN

Capital campaign for Progress House 1,000,000

Candles, Inc.

Terre Haute, IN

Updated feasibility study for potential Indianapolis site 15,000

Career Learning & Employment Center for Veterans, Inc.

(Operation: Job Ready Veterans)

Indianapolis, IN

Continued support for Operation: Job Ready Veterans 787,000

The Children's Museum of Indianapolis, Inc.

Indianapolis, IN

Centennial Capital Campaign 30,000,000

CICP Foundation Inc.

(Central Indiana Corporate Partnership Foundation)

Indianapolis, IN

CICP charitable, educational and scientific programs (a \$50,000,000 grant shared with the Education Division) 25,000,000

Coalition for Homelessness Intervention and Prevention of Greater Indianapolis (CHIP)

Indianapolis, IN

General operating support 390,000

Community Action of Greater Indianapolis, Incorporated

Indianapolis, IN

| | |
|---------------------------|---------|
| Capacity building support | 500,000 |
|---------------------------|---------|

Conner Prairie Museum Inc.

Fishers, IN

| | |
|--|---------|
| Special recognition grant in honor of Eli (Ted) Lilly II | 200,000 |
|--|---------|

The Conversation US Inc.

Waltham, MA

| | |
|-------------------|--------|
| Feasibility study | 80,000 |
|-------------------|--------|

Crossroads Rehabilitation Center, Inc. (Easterseals Crossroads)

Indianapolis, IN

| | |
|---|---------|
| Continuation of the Autism Family Support Center and related programs | 875,000 |
|---|---------|

Dance Kaleidoscope Inc.

Indianapolis, IN

| | |
|---------------------------|---------|
| General operating support | 100,000 |
|---------------------------|---------|

Discovering Broadway, Inc.

Indianapolis, IN

| | |
|---|--------|
| Study of infrastructure to host premiere musicals in Indianapolis | 50,000 |
|---|--------|

Domestic Violence Network of Greater Indianapolis, Inc. (Domestic Violence Prevention Network)

Indianapolis, IN

| | |
|---------------------------|---------|
| General operating support | 300,000 |
| Needs assessment | 50,000 |

Dove Recovery House for Women

Indianapolis, IN

| | |
|------------------|---------|
| Capital campaign | 750,000 |
|------------------|---------|

Dress for Success Indianapolis Inc.

Indianapolis, IN

| | |
|-------------------|--------|
| Capacity building | 50,000 |
|-------------------|--------|

Economic Club of Indiana, Inc.

Indianapolis, IN

| | |
|--|--------|
| Enhanced marketing and planning efforts to commemorate its 50th anniversary season | 50,000 |
| General operating support | 10,000 |

Eiteljorg Museum of American Indians and Western Art Inc.

Indianapolis, IN

| | |
|---------------------------------------|---------|
| Eiteljorg Contemporary Art Fellowship | 600,000 |
|---------------------------------------|---------|

Feeding Indiana's Hungry Inc.

Indianapolis, IN

| | |
|--|-----------|
| Food relief and capacity building for Indiana food banks | 2,149,500 |
|--|-----------|

Film Independent Inc.

Los Angeles, CA

| | |
|--------------------------------------|--------|
| Support for "The Ice Cream Man" film | 50,000 |
|--------------------------------------|--------|

Gleaners Food Bank of Indiana, Inc.

Indianapolis, IN

| | |
|-------------|-----------|
| Food relief | 1,000,000 |
|-------------|-----------|

Grace Schools (Grace College)

Winona Lake, IN

| | |
|---|---------|
| Special recognition grant in honor of Eli (Ted) Lilly II – Support for Lilly Center for Lakes & Streams project | 200,000 |
|---|---------|

Harrison Center for the Arts Inc. (Harrison Center)

Indianapolis, IN

| | |
|--|---------|
| General operating support | 100,000 |
| Support for artist services and projects | 225,000 |

Heartland Film, Inc.

Indianapolis, IN

| | |
|---------------------------|---------|
| General operating support | 300,000 |
|---------------------------|---------|





Historic Landmarks Foundation of Indiana, Inc. (Indiana Landmarks)

Indianapolis, IN

| | |
|--|---------|
| Special recognition grant in honor of Eli (Ted) Lilly II | 100,000 |
|--|---------|

Immigrant Welcome Center Inc.

Indianapolis, IN

| | |
|-------------------------|--------|
| Technology enhancements | 35,000 |
|-------------------------|--------|

Indiana Association for Community Economic Development Inc. (Prosperity Indiana)

Indianapolis, IN

| | |
|---------------------------|---------|
| General operating support | 175,000 |
|---------------------------|---------|

Indiana Association of United Ways, Inc. (Indiana United Ways)

Indianapolis, IN

| | |
|--|-----------|
| General operating support | 1,240,000 |
| Indiana disaster relief and recovery efforts | 5,000,000 |

Indiana Community Development Projects Inc.

Indianapolis, IN

| | |
|---------------------------|---------|
| Initial operating support | 250,000 |
|---------------------------|---------|

Indiana Department of Natural Resources

Indianapolis, IN

| | |
|---------------------------------|------------|
| Support for Indiana state parks | 50,000,000 |
|---------------------------------|------------|

Indiana Historical Society

Indianapolis, IN

| | |
|---|-----------|
| Comprehensive planning for a digital encyclopedia of Indiana | 471,372 |
| Indiana Heritage Support Grants Program | 5,631,667 |
| Pilot project to enhance visitor and digital engagement through Artificial Intelligence | 1,507,476 |
| Planning for America's 250th anniversary in Indiana | 48,653 |
| Special recognition grant in honor of Eli (Ted) Lilly II | 100,000 |

Indiana Humanities Council Inc.

Indianapolis, IN

| | |
|---------------------------|---------|
| General operating support | 175,000 |
|---------------------------|---------|

Indiana Music Education Association Foundation

Indianapolis, IN

| | |
|-------------------|--------|
| Capacity building | 50,000 |
|-------------------|--------|

Indiana National Guard Relief Fund, Inc.

Indianapolis, IN

| | |
|---|---------|
| Continuing support for the Indiana National Guard Relief Fund | 350,000 |
|---|---------|

Indiana Philanthropy Alliance Foundation, Inc.

Indianapolis, IN

| | |
|---|-----------|
| Community Foundation Internship Program | 1,473,160 |
| Community foundation technical assistance | 775,000 |

Indiana Philanthropy Alliance, Inc.

Indianapolis, IN

| | |
|---------------------------|---------|
| General operating support | 300,500 |
|---------------------------|---------|

Indiana Repertory Theatre, Inc.

Indianapolis, IN

| | |
|---------------------------|---------|
| General operating support | 400,000 |
|---------------------------|---------|

Indiana Sports Corporation

Indianapolis, IN

| | |
|---------------------------|---------|
| General operating support | 500,000 |
|---------------------------|---------|

Indiana Symphony Society, Inc. (Indianapolis Symphony Orchestra)

Indianapolis, IN

| | |
|---------------------------|-----------|
| General operating support | 1,237,000 |
|---------------------------|-----------|

Indiana University Foundation
Bloomington, IN
Pilot project to enhance fundraising capacity
of Indiana's nonprofit sector 448,660

**Indiana White River State Park
Development Commission**
Indianapolis, IN
White River State Park expansion 30,000,000

**Indianapolis Art Center, Inc.
(Indy Art Center)**
Indianapolis, IN
General operating support 200,000

Indianapolis Ballet, Inc.
Indianapolis, IN
Capacity building 225,000

Indianapolis Chamber Orchestra Inc.
Indianapolis, IN
Production of "A Classical Christmas" 15,000

Indianapolis Children's Choir, Incorporated
Indianapolis, IN
General operating support 150,000

Indianapolis Cultural Trail, Inc.
Indianapolis, IN
Comprehensive planning to improve
Cultural Trail maintenance 3,053,046

**Indianapolis Department of Public
Works (City of Indianapolis Department
of Public Works)**
Indianapolis, IN
Henry Street bridge enhancements 15,000,000

**Indianapolis Film Project, Inc.
(Kan-Kan Cinema)**
Indianapolis, IN
Strategic and development planning 49,500

Indianapolis Foundation, Inc.
Indianapolis, IN
Housing to Recovery Fund 2,000,000

Indianapolis Jazz Foundation Inc.
Indianapolis, IN
2024 Indy Jazz Fest 50,000

**Indianapolis Museum of Art Inc.
(Newfields)**
Indianapolis, IN
General operating support 500,000
Special recognition grant in honor of Eli (Ted) Lilly II -
Support for the Oldfields Fund 200,000

**Indianapolis Neighborhood Housing
Partnership Inc. (INHP)**
Indianapolis, IN
General operating support 5,300,000

Indianapolis Opera Company
Indianapolis, IN
General operating support 90,000
50th anniversary season marketing and
special events 25,000

**Indianapolis Shakespeare Company, Inc.
(Indy Shakes)**
Indianapolis, IN
General operating support 40,000

Indianapolis Symphonic Choir, Inc.
Indianapolis, IN
Strategic planning and audience development 122,000



**Indianapolis Zoological Society, Inc.
(Indianapolis Zoo)**

Indianapolis, IN

| | |
|---|-----------|
| General operating support | 1,116,720 |
| Special recognition grant in honor of Eli (Ted) Lilly II - Support for capital campaign | 200,000 |

Indy Hunger Network

Indianapolis, IN

| | |
|-------------------|--------|
| Capacity building | 50,000 |
|-------------------|--------|

Intend Indiana, Inc.

Indianapolis, IN

| | |
|---|--------|
| State-wide land banking technology platform | 50,000 |
|---|--------|

International Center Inc.

Indianapolis, IN

| | |
|---------------------------|---------|
| General operating support | 500,000 |
|---------------------------|---------|

Keep Indianapolis Beautiful Inc.

Indianapolis, IN

| | |
|---------------------------|---------|
| General operating support | 325,000 |
|---------------------------|---------|

Leadership Indianapolis

Indianapolis, IN

| | |
|-------------------|--------|
| 2024 Get on Board | 20,000 |
|-------------------|--------|

Local Initiatives Support Corporation (LISC)

New York, NY

| | |
|---------------------------|---------|
| Indianapolis LISC program | 500,000 |
|---------------------------|---------|

**Mentoring Women's Network
Foundation, Inc. (Pass the Torch for
Women Foundation)**

Indianapolis, IN

| | |
|-------------------|--------|
| Capacity building | 30,000 |
|-------------------|--------|

**Midwest Food Bank NFP
(Midwest Food Bank - Indiana Division)**

Indianapolis, IN

| | |
|----------------------------|--------|
| Campaign feasibility study | 50,000 |
|----------------------------|--------|

National Park Foundation

Washington, DC

| | |
|-------------------------------------|-------------|
| Support for national parks campaign | 100,000,000 |
|-------------------------------------|-------------|

The Nationalities Council of Indiana Inc.

Indianapolis, IN

| | |
|--|--------|
| 2024 Indy International Festival programming | 12,000 |
|--|--------|

**Neighborlink Indianapolis Foundation Inc.
(Home Repairs for Good)**

Indianapolis, IN

| | |
|-------------------|--------|
| Capacity building | 50,000 |
|-------------------|--------|

The New Harmony Project, Inc.

Indianapolis, IN

| | |
|---------------------------|--------|
| General operating support | 50,000 |
|---------------------------|--------|

North Carolina Community Foundation Inc.

Raleigh, NC

| | |
|---|-----------|
| Contribution to disaster relief fund for long-term recovery | 7,500,000 |
|---|-----------|

Patchwork Indy Inc.

Indianapolis, IN

| | |
|-------------------|--------|
| Feasibility study | 50,000 |
|-------------------|--------|

Percussive Arts Society Inc.

Indianapolis, IN

| | |
|--------------------|--------|
| Strategic planning | 35,000 |
|--------------------|--------|

Regional Opportunity Initiatives Inc.

Bloomington, IN

| | |
|--|-----------|
| General operating support (a \$2,142,617 grant shared with the Education Division) | 1,071,309 |
|--|-----------|



Sagamore Institute Inc.

Indianapolis, IN

| | |
|--------------------------------------|---------|
| General operating support | 300,000 |
| Media Literacy and Civic Engagement | 45,000 |
| The Tenderness Tour documentary film | 50,000 |

Salvation Army National Corporation

Alexandria, VA

| | |
|-----------------|------------|
| Disaster relief | 10,000,000 |
|-----------------|------------|

Second Helpings, Inc.

Indianapolis, IN

| | |
|-------------------|--------|
| Capacity building | 50,000 |
|-------------------|--------|

Steward Speakers, Inc.

Indianapolis, IN

| | |
|----------------------------|--------|
| Support for lecture series | 50,000 |
|----------------------------|--------|

Storytelling Arts of Indiana

Indianapolis, IN

| | |
|-----------------------|--------|
| Leadership transition | 15,000 |
|-----------------------|--------|

Tourism Tomorrow, Inc.

Indianapolis, IN

| | |
|---|--------|
| Study to understand perception of Indianapolis as convention host | 50,000 |
|---|--------|

Trinity Haven, Inc.

Indianapolis, IN

| | |
|----------------------|--------|
| Database development | 50,000 |
|----------------------|--------|

Trusted Mentors Inc.

Indianapolis, IN

| | |
|--|--------|
| Fundraising capacity building and strategic plan support | 50,000 |
|--|--------|

Unconditional Inc.

Indianapolis, IN

| | |
|----------------------------------|--------|
| Development planning and website | 50,000 |
|----------------------------------|--------|

United Way of Central Indiana, Inc.

Indianapolis, IN

| | |
|---|-----------|
| Facilities Maintenance Fund | 4,040,000 |
| Homelessness Targeted Initiatives Fund | 170,550 |
| Pilot program to encourage and enhance volunteerism in Indianapolis | 1,301,843 |
| Support for 2024 annual fundraising | 4,300,000 |
| Winter contingency homeless response | 750,000 |

University of Southern Indiana

Evansville, IN

| | |
|--|---------|
| General operating support for Historic New Harmony project | 125,000 |
|--|---------|

White House Historical Association

Washington, DC

| | |
|--|------------|
| Support for "The People's House: A White House Experience" | 10,000,000 |
|--|------------|

Young Audiences of Indiana, Inc.

(Arts for Learning Indiana)

Indianapolis, IN

| | |
|---------------------------|---------|
| General operating support | 200,000 |
|---------------------------|---------|

College and Community Collaboration

Initiative to support colleges and universities in Indiana as they collaborate with organizations in their local communities to improve quality of life for their campuses and the neighborhoods, towns, cities and counties surrounding them. Implementation grants allocated between Community Development and Education divisions total \$302,664,000.

(13 grants)

| | |
|---|-------------|
| Community Development Division funding total: | 151,332,000 |
|---|-------------|

Butler University (a \$22,500,000 grant shared with the Education Division)

Calumet College of St. Joseph (a \$15,000,000 grant shared with the Education Division)

DePauw University (a \$32,000,000 grant shared with the Education Division)

Grace Schools (Grace College) (a \$27,000,000 grant shared with the Education Division)

Hanover College Trustees (a \$30,000,000 grant shared with the Education Division)

Indiana Institute of Technology, Inc. (a \$21,000,000 grant shared with the Education Division)

Indiana University Foundation (a \$16,000,000 grant shared with the Education Division)

Indiana Wesleyan University (a \$24,336,000 grant shared with the Education Division)

Manchester University, Inc. (a \$12,128,000 grant shared with the Education Division)

Marian University (a \$25,000,000 grant shared with the Education Division)

Rose-Hulman Institute of Technology (a \$30,500,000 grant shared with the Education Division)

Trine University (a \$17,200,000 grant shared with the Education Division)

University of Notre Dame (a \$30,000,000 grant shared with the Education Division)

Fostering Character Through Children's Museums

Initiative to assist museums serving children and families in their efforts to initiate, expand or enhance programs and practices to promote character development. Implementation grants allocated between Community Development and Education divisions total \$38,487,280.

(15 grants)

Community Development Division funding total: 19,243,640

Children's Museum (Boston Children's Museum), Boston, MA (a \$2,499,243 grant shared with the Education Division)

Children's Museum of Denver, Inc., Denver, CO (a \$2,500,000 grant shared with the Education Division)

The Children's Museum of Indianapolis, Inc. Indianapolis, IN (a \$3,500,000 grant shared with the Education Division)

Children's Museum of Phoenix, Phoenix, AZ (a \$2,500,000 grant shared with the Education Division)

Children's Museum of Pittsburgh, Pittsburgh, PA (a \$2,490,400 grant shared with the Education Division)

Children's Museum of Tampa, Inc. (Glazer Children's Museum), Tampa, FL (a \$2,500,000 grant shared with the Education Division)

Children's Museum, Inc. (Children's Museum Houston), Houston, TX (a \$2,499,939 grant shared with the Education Division)

Discovery Center Museum of Rockford, Inc., Rockford, IL (a \$2,497,698 grant shared with the Education Division)

Discovery Science Center of Orange County (Discovery Cube), Santa Ana, CA (a \$2,500,000 grant shared with the Education Division)

Explora Science Center & Children's Museum of Albuquerque, Albuquerque, NM (a \$2,500,000 grant shared with the Education Division)

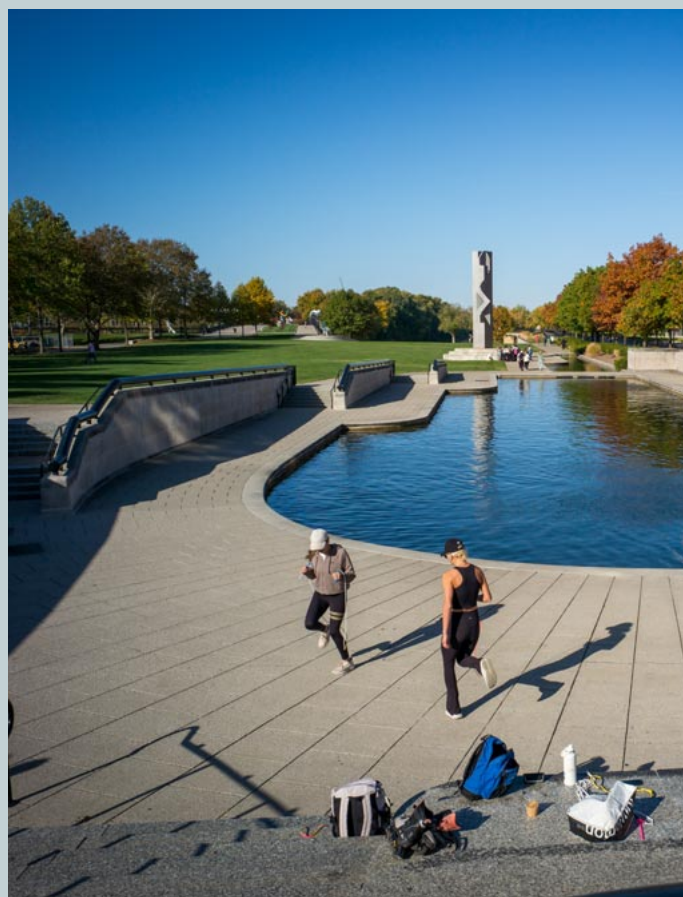
Madison Children's Museum, Inc., Madison, WI (a \$2,500,000 grant shared with the Education Division)

The Magic House, St. Louis Children's Museum, St. Louis, MO (a \$2,500,000 grant shared with the Education Division)

Margaret Woodbury Strong Museum (The Strong National Museum of Play), Rochester, NY (a \$2,500,000 grant shared with the Education Division)

Museum of Discovery and Science, Inc., Ft. Lauderdale, FL (a \$2,500,000 grant shared with the Education Division)

Thanksgiving Point Institute, Inc., Lehi, UT (a \$2,500,000 grant shared with the Education Division)



Giving Indiana Funds for Tomorrow (GIFT) Phase VIII

Initiative to help community foundations in Indiana, including county affiliate funds of community foundations, build unrestricted endowments; fund special projects to enhance quality of life in their communities; strengthen community foundation leadership; and gain a deeper understanding of the needs and aspirations of all residents in their counties.

Implementation

Each community foundation could seek implementation grants for projects and programs in their own county. They also had an option to collaborate with community foundations in other counties to address shared priorities by participating in one additional joint/regional proposal.

| | |
|--|-------------|
| (30 competitive implementation grants, ranging from \$467,327 to \$20 million) | 171,376,851 |
| Blackford County Community Foundation, Hartford City, IN | 3,097,510 |
| Blue River Foundation Inc. (Blue River Community Foundation), Shelbyville, IN | 5,000,000 |
| Cass County Community Foundation Inc., Logansport, IN | 5,000,000 |
| City of Connersville, Connersville, IN | 2,500,000 |
| Community Foundation Alliance, Inc., Evansville, IN (2) | 11,715,058 |
| Community Foundation DeKalb County, Auburn, IN | 5,000,000 |

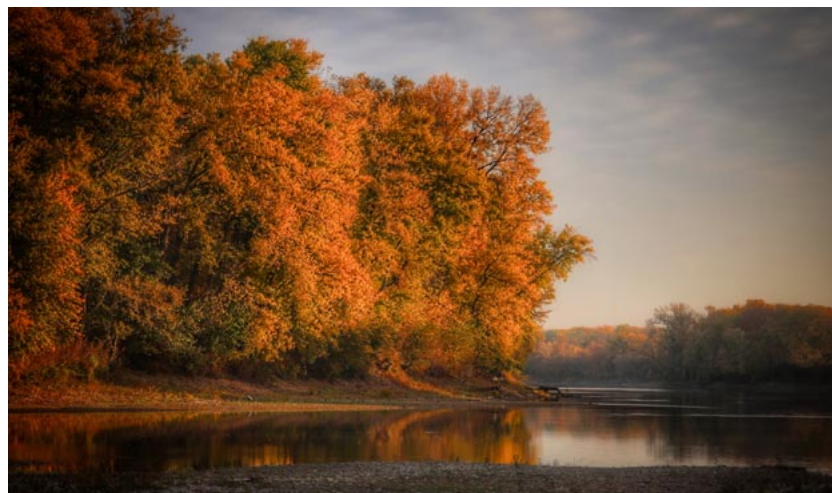
| | |
|---|------------|
| Community Foundation of Bloomington and Monroe County, Inc., Bloomington, IN (2) | 15,228,505 |
| Community Foundation of Elkhart County, Elkhart, IN | 7,500,000 |
| Community Foundation of Jackson County, Inc., Seymour, IN | 3,443,000 |
| Community Foundation of St. Joseph County, Inc., South Bend, IN (2) | 30,000,000 |
| Community Foundation of Switzerland County Inc., Vevay, IN | 467,327 |
| Decatur County Community Foundation Inc., Greensburg, IN | 5,000,000 |
| Dubois County Community Foundation Inc., Jasper, IN | 1,419,942 |
| Fayette County Foundation, Inc., Connersville, IN | 2,500,000 |
| Greater Lafayette Community Foundation (Community Foundation of Greater Lafayette), Lafayette, IN | 7,061,721 |
| The Greene County Foundation, Inc. (Greene County Foundation), Bloomfield, IN | 4,999,486 |
| Harrison County Community Foundation Inc., Corydon, IN | 4,496,469 |
| Huntington County Community Foundation, Inc., Huntington, IN | 4,806,133 |
| Kosciusko County Community Foundation, Inc., Warsaw, IN | 1,034,500 |
| LaGrange County Community Foundation Inc., LaGrange, IN | 5,000,000 |
| Legacy Foundation Inc., Merrillville, IN | 20,000,000 |
| Rush County Community Foundation Inc., Rushville, IN | 5,000,000 |
| Steuben County Community Foundation Inc., Angola, IN | 3,007,200 |
| Unity Foundation of LaPorte County, Inc., Michigan City, IN | 3,600,000 |
| Wabash Valley Community Foundation Inc., Terre Haute, IN | 6,500,000 |
| Warren County Community Foundation Inc., Williamsport, IN | 3,000,000 |
| Wayne County, Indiana Foundation, Inc. (Wayne County Foundation), Richmond, IN | 5,000,000 |

Community Foundation Matching Grants

Grants to community foundations that match community donations to help the foundations develop unrestricted assets, fund projects and programs that address local needs, and build community foundations' internal capacity. Matching grants were approved for community foundations serving all of Indiana's 92 counties.

(92 grants) 133,788,412

| | |
|---|---------|
| Adams County Community Foundation Inc., Decatur, IN | 750,000 |
| Benton Community Foundation Inc., Fowler, IN | 750,000 |
| Blackford County Community Foundation, Hartford City, IN | 750,000 |
| Blue River Foundation Inc. (Blue River Community Foundation), Shelbyville, IN | 750,000 |



| | |
|--|-----------|
| Brown County Community Foundation Inc., Nashville, IN | 750,000 |
| Cass County Community Foundation Inc., Logansport, IN | 750,000 |
| Community Foundation Alliance, Inc., Evansville, IN (9) | 9,682,860 |
| Community Foundation DeKalb County, Auburn, IN | 750,000 |
| Community Foundation of Bloomington and Monroe County, Inc., Bloomington, IN | 2,250,000 |
| Community Foundation of Boone County Inc., Lebanon, IN | 1,500,000 |
| Community Foundation of Crawford County Inc., Marengo, IN | 750,000 |
| Community Foundation of Elkhart County, Elkhart, IN | 3,750,000 |
| Community Foundation of Grant County Indiana Inc., Marion, IN | 1,500,000 |
| Community Foundation of Greater Fort Wayne, Inc., Fort Wayne, IN | 5,700,000 |
| Community Foundation of Hancock County, Inc., Greenfield, IN | 1,500,000 |
| Community Foundation of Howard County Inc., Kokomo, IN (3) | 3,000,000 |
| Community Foundation of Jackson County, Inc., Seymour, IN | 750,000 |
| Community Foundation of Madison and Jefferson County, Inc., Madison, IN | 750,000 |
| Community Foundation of Morgan County, Inc., Martinsville, IN | 1,094,469 |
| Community Foundation of Muncie and Delaware County Inc., Muncie, IN | 2,250,000 |
| Community Foundation of Pulaski County, Inc., Winamac, IN | 750,000 |
| Community Foundation of Randolph County Inc., Winchester, IN | 750,000 |
| Community Foundation of Southern Indiana Inc., New Albany, IN (2) | 3,750,000 |

| | |
|---|------------|
| Community Foundation of St. Joseph County, Inc., South Bend, IN | 4,500,000 |
| Community Foundation of Switzerland County Inc., Vevay, IN | 100,000 |
| Community Foundation of Wabash County, Inc., North Manchester, IN | 750,000 |
| Community Foundation Partnership, Inc., Bedford, IN (2) | 1,500,000 |
| Dearborn Community Foundation, Inc., Lawrenceburg, IN | 1,500,000 |
| Decatur County Community Foundation Inc., Greensburg, IN | 750,000 |
| Dubois County Community Foundation Inc., Jasper, IN | 750,000 |
| Fayette County Foundation, Inc., Connersville, IN | 750,000 |
| Franklin County Community Foundation Inc., Brookville, IN | 750,000 |
| Greater Lafayette Community Foundation (Community Foundation of Greater Lafayette), Lafayette, IN (2) | 3,750,000 |
| The Greene County Foundation, Inc. (Greene County Foundation), Bloomfield, IN | 750,000 |
| Hamilton County Community Foundation, Inc., Fishers, IN | 6,000,000 |
| Harrison County Community Foundation Inc., Corydon, IN | 750,000 |
| Hendricks County Community Foundation, Inc., Avon, IN | 3,000,000 |
| Henry County Community Foundation, Inc., New Castle, IN | 750,000 |
| Heritage Fund of Bartholomew County Inc., Columbus, IN | 1,500,000 |
| Huntington County Community Foundation, Inc., Huntington, IN | 750,000 |
| Indianapolis Foundation, Inc., Indianapolis, IN | 15,000,000 |
| Jasper Newton Foundation Inc., Rensselaer, IN (2) | 1,500,000 |
| Jennings County Community Foundation Inc., North Vernon, IN | 750,000 |
| Johnson County Community Foundation, Inc., Franklin, IN | 3,000,000 |
| Kosciusko County Community Foundation, Inc., Warsaw, IN | 1,500,000 |
| LaGrange County Community Foundation Inc., LaGrange, IN | 750,000 |
| Legacy Foundation Inc., Merrillville, IN | 7,500,000 |
| Madison County Community Foundation Inc., Anderson, IN | 2,250,000 |
| Marshall County Community Foundation Inc., Plymouth, IN | 750,000 |
| Montgomery County Community Foundation Inc., Crawfordsville, IN | 750,000 |
| Noble County Community Foundation Inc., Ligonier, IN | 750,000 |
| Northern Indiana Community Foundation, Rochester, IN (3) | 2,250,000 |



| | |
|--|-----------|
| Ohio County Community Foundation Inc., Rising Sun, IN | 300,000 |
| Orange County Community Foundation Inc., Paoli, IN | 750,000 |
| Owen County Community Foundation, Inc., Spencer, IN | 750,000 |
| Parke County Community Foundation Inc., Rockville, IN | 750,000 |
| Porter County Community Foundation Inc., Valparaiso, IN | 3,000,000 |
| The Portland Foundation (Portland Foundation), Portland, IN | 750,000 |
| The Putnam County Community Foundation, Inc. (Putnam County Community Foundation), Greencastle, IN | 750,000 |
| Ripley County Community Foundation Inc., Batesville, IN | 750,000 |
| Rush County Community Foundation Inc., Rushville, IN | 750,000 |
| Scott County Community Foundation Inc., Scottsburg, IN | 750,000 |
| Steuben County Community Foundation Inc., Angola, IN | 750,000 |
| Tipton County Foundation, Inc., Tipton, IN | 750,000 |
| Union County Foundation Inc., Liberty, IN | 736,083 |
| Unity Foundation of LaPorte County, Inc., Michigan City, IN | 2,250,000 |
| Wabash Valley Community Foundation Inc., Terre Haute, IN (3) | 3,750,000 |
| Warren County Community Foundation Inc., Williamsport, IN | 750,000 |
| Washington County Community Foundation, Inc., Salem, IN | 750,000 |
| Wayne County, Indiana Foundation, Inc. (Wayne County Foundation), Richmond, IN | 1,500,000 |
| Wells County Foundation Inc., Bluffton, IN | 675,000 |
| Western Indiana Community Foundation, Inc., Covington, IN (2) | 1,500,000 |
| Whitley County Community Foundation Inc., Columbia City, IN | 750,000 |

Holiday Assistance Fund

Grants to central Indiana organizations to support their holiday assistance efforts in Indianapolis (Marion County)

(34 grants) 750,000

| | |
|--|---------|
| Barnes United Methodist Church | 20,000 |
| Brookside Community Church of Indianapolis, Inc. | 20,000 |
| Catholic Charities Indianapolis, Inc. | 20,000 |
| Christ Emmanuel Missionary Baptist Church Incorporated | 2,500 |
| Community Action of Greater Indianapolis, Incorporated | 15,000 |
| Concord Center Association Inc. | 5,000 |
| East 10th Children and Youth Center, Inc. (East Tenth United Methodist Children and Youth Center) | 5,000 |
| Flanner House of Indianapolis Inc. | 25,000 |
| Gleaners Food Bank of Indiana, Inc. | 15,000 |
| Hall Temple Church of God in Christ | 8,500 |
| Hasah Inc. (Ebenezer Baptist Church) | 20,000 |
| The Hovey Church of Christ of Indianapolis Ind., Inc. | 12,000 |
| Iglesia Ebenezer, Inc. | 17,125 |
| Indiana F.O.P. Foundation, Inc. | 10,000 |
| Indianapolis First Church of the Nazarene | 17,000 |
| Indianapolis Hispanic Foursquare Church (Indianapolis Foursquare Church) | 15,000 |
| Indianapolis Urban League, Inc. | 35,000 |
| Insight Development Corporation | 16,000 |
| Kingdom Apostolic Ministries International, Inc. | 11,500 |
| Kingsley Terrace Church of Christ Incorporated | 6,000 |
| La Plaza Inc. | 25,000 |
| Latino Community Development Corporation | 18,500 |
| Lutheran Child & Family Services of Indiana (Lutheran Child & Family Services of Indiana/Kentucky) | 22,925 |
| Metro Baptist Center, Inc. | 5,500 |
| Mozell Sanders Foundation Inc. | 10,000 |
| New Covenant Church & Ministries Inc. | 3,800 |
| Old Bethel United Methodist Church | 3,000 |
| Power of the Blood Ministries, Inc. | 4,000 |
| Rev. Richard Hunter Ministries | 15,000 |
| Roberts Park United Methodist Church | 17,500 |
| The Salvation Army (Salvation Army Indiana Division) | 275,600 |
| Southeast Community Services, Inc. | 20,800 |
| University United Methodist Church | 12,750 |
| Westminster Neighborhood Services, Inc. | 20,000 |

Legal Services Sustainability

Support to legal services organizations based in Indianapolis to help bolster their long-term sustainability plans

(3 grants) 12,500,000

| | |
|--|-----------|
| Indiana Legal Services, Inc. | 7,500,000 |
| Indianapolis Legal Aid Society, Inc. | 2,500,000 |
| Neighborhood Christian Legal Clinic Inc. | 2,500,000 |

Philanthropy

(7 grants) 868,468

| | |
|---|---------|
| Candid, New York, NY (2) | 156,968 |
| Council on Foundations, Inc., Washington, DC (2) | 544,000 |
| Independent Sector, Washington, DC | 17,500 |
| Indiana Philanthropy Alliance, Inc., Indianapolis, IN | 50,000 |
| Philanthropy Roundtable, Washington, DC | 100,000 |

Community Violence Intervention Grants

Support for efforts to mitigate gun violence in Indianapolis

(18 grants) 4,600,000

| | |
|--|---------|
| Boys & Girls Clubs of Indianapolis, Inc. | 400,000 |
| Brookside Community Development Corporation | 225,000 |
| Community Action of Greater Indianapolis, Incorporated | 275,000 |
| Eclectic Soul VOICES Corporation | 225,000 |
| Edna Martin Christian Center Inc. | 325,000 |
| Emmanuel Missionary Baptist Church, Inc. | 100,000 |
| Eskenazi Health Foundation, Inc. | 500,000 |
| EVOLVE International, Inc. | 100,000 |
| Flanner House of Indianapolis Inc. | 200,000 |
| Indianapolis Ten Point Coalition, Inc. (Ten Point Coalition of Indianapolis) | 250,000 |
| Martin Luther King Multi-Service Center Indianapolis Incorporated (MLK Center) | 300,000 |
| New Breed of Youth Mentoring Program Inc. (New B.O.Y.) | 100,000 |
| New Direction Christian Church, Inc. | 100,000 |
| Pathway to the Future Learning Center Inc. (Pathway Resource Center) | 150,000 |
| Public Advocates in Community Re Entry (PACE) | 500,000 |
| Reach for Youth, Inc. | 200,000 |
| Stop the Violence Indianapolis Inc. | 250,000 |
| Workforce Inc. (RecycleForce) | 400,000 |

Subtotal -

| | |
|---|-------------|
| Community Development Division Grants | 870,811,327 |
| Community Development Division Discretionary Grants | 30,500 |

Total

| | |
|---------------------------------------|-------------|
| Community Development Division Grants | 870,841,827 |
|---------------------------------------|-------------|

EDUCATION AND YOUTH GRANTS

DOLLAR AMOUNT APPROVED IN 2024

American Camping Association, Inc. (American Camp Association)

Martinsville, IN

Supporting camp programs on Indiana college campuses 999,029

American Council on Education

Washington, DC

Support for a pilot military learner program that will increase access to credits for prior learning for veterans and military service members at institutions of higher education 500,000

American Indian College Fund

Denver, CO

Indigenous Early Childhood Education Program 4,000,000

Battery Innovation Center Institute Inc.

Newberry, IN

Awards and university expenses for Indy Autonomous Challenge project 1,500,000

Christel House International, Inc.

Indianapolis, IN

College and Career Success Pilot 500,000

CICP Foundation Inc. (Central Indiana Corporate Partnership Foundation)

Indianapolis, IN

CICP charitable, educational and scientific programs (a \$50,000,000 grant shared with the Community Development Division) 25,000,000

Civic News Company (Chalkbeat)

New York, NY

Continued support for Indiana education news service 275,000

Community-Engaged Alliance, Inc.

Indianapolis, IN

Campus community engagement programs 936,573

Complete College America Inc.

Indianapolis, IN

Support for the 2024 National Convening 25,000

Diversity in Leadership Inc.

Indianapolis, IN

Operating support and external assessment 400,000

Duke University

Durham, NC

Lilly Library renovation and expansion 5,000,000

Early Learning Indiana Inc.

Indianapolis, IN

Supporting early language development and literacy skills 3,232,500

Eskenazi Health Foundation, Inc.

Indianapolis, IN

Support for Gregory S. Fehribach Center internship program 10,000,000

Fred Rogers Productions

Pittsburgh, PA

| | |
|--|-----------|
| Character development through children's media | 2,000,000 |
|--|-----------|

The Greater Washington Educational Telecommunications Association, Inc. (WETA)

Arlington, VA

| | |
|---|---------|
| Support for "The American Revolution" documentary film series (a \$1,750,000 grant shared with the Religion Division) | 875,000 |
|---|---------|

Independent Colleges of Indiana, Inc.

Indianapolis, IN

| | |
|---|-----------|
| Administration of the Lilly Endowment Community Scholarship Program 2025/2026 | 2,408,500 |
|---|-----------|

| | |
|--|------------|
| Lilly Endowment Community Scholarship Program for 2026 | 19,000,000 |
|--|------------|

Indiana Association for the Education of Children, Inc. (Indiana Association for the Education of Young Children)

Indianapolis, IN

| | |
|-------------------|--------|
| Capacity building | 50,000 |
|-------------------|--------|

Indiana Lifelong Learning Projects Inc

Indianapolis, IN

| | |
|---------------------------|---------|
| Initial operating support | 250,000 |
|---------------------------|---------|

Indiana State University

Terre Haute, IN

| | |
|---|---------|
| Extending Teacher Creativity 2025: A Summer Workshop for Teacher Creativity Fellows | 135,500 |
|---|---------|

Indiana Student Financial Aid Association, Inc.

Indianapolis, IN

| | |
|---------------------------------|--------|
| College Goal Sunday 2025 events | 50,000 |
|---------------------------------|--------|

Indiana University Foundation

Bloomington, IN

| | |
|--|-------------|
| IU Launch Accelerator for Biosciences at 16 Tech Innovation District | 138,000,000 |
|--|-------------|

Indiana Youth Institute, Inc.

Indianapolis, IN

| | |
|--|-----------|
| Continuation of the College and Career Counseling Initiative | 1,575,000 |
|--|-----------|

Indianapolis Black Alumni Council

Indianapolis, IN

| | |
|--------------------------|--------|
| 2024 College Fair events | 15,000 |
|--------------------------|--------|

Ivy Tech Foundation Inc.

Indianapolis, IN

| | |
|---|------------|
| Strengthening Indiana's early childhood education workforce | 21,906,231 |
|---|------------|

Martin University, Inc.

Indianapolis, IN

| | |
|-----------------------------------|---------|
| Comprehensive external evaluation | 295,000 |
|-----------------------------------|---------|

The Mind Trust, Inc. (Mind Trust)

Indianapolis, IN

| | |
|---|-----------|
| Continued support for Teach For America (Indianapolis) and Indianapolis Teaching Fellows projects | 3,475,000 |
|---|-----------|

| | |
|---|---------|
| Indianapolis parent engagement programs | 685,000 |
|---|---------|

| | |
|--|-----------|
| Partial support for Summer Learning Labs | 6,000,000 |
|--|-----------|

Nearspace Education Inc.

Upland, IN

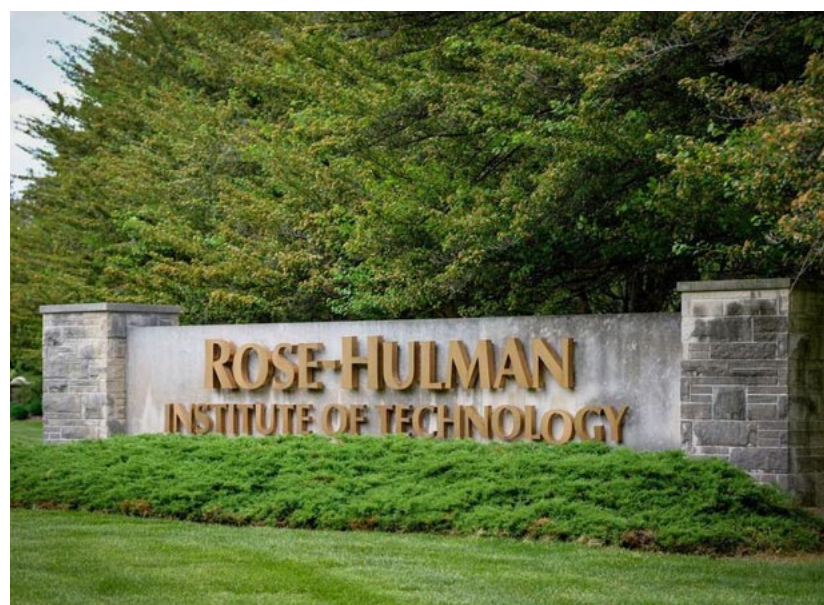
| | |
|--|--------|
| Touch the Sky: Bringing the 2024 Eclipse to Hoosiers who are Blind and Visually Impaired | 49,800 |
|--|--------|

Project Lead the Way, Inc.

Indianapolis, IN

| | |
|------------------------------|-----------|
| Program expansion in Indiana | 5,000,000 |
|------------------------------|-----------|

| | |
|--|---------|
| Study on STEM programming in Indiana out-of-school time programs | 250,000 |
|--|---------|



| | |
|--|--------|
| The Reading League Syracuse, NY | |
| Planning to provide Science of Reading support to teacher preparation programs | 50,000 |

| | |
|--|-----------|
| Regional Opportunity Initiatives Inc. Bloomington, IN | |
| General operating support (a \$2,142,617 grant shared with the Community Development Division) | 1,071,308 |

| | |
|--|---------|
| St. Joseph Institute for the Deaf Indianapolis, IN | |
| Capacity building and support | 130,000 |

| | |
|---|------------|
| Thurgood Marshall College Fund Washington, DC | |
| HBCU capacity building | 25,000,000 |

| | |
|--|---------|
| United Negro College Fund Inc. (UNCF) Washington, DC | |
| Support for the UNCF Indiana Campaign | 100,000 |

| | |
|--|-----------|
| Wake Forest University Winston-Salem, NC | |
| Supplement support for Educating Character Initiative (a \$12,478,193 grant shared with the Religion Division) | 6,239,096 |

Advancing Science of Reading in Indiana

| | |
|---|-----------|
| Initiative to help colleges and universities in Indiana implement plans to help strengthen efforts to incorporate methods aligned with the Science of Reading into their teacher preparation programs (implementation grants) | |
| Indiana Wesleyan University, Marion, IN | 1,000,000 |
| Trine University, Angola, IN | 750,000 |

Character Development Programs in National Youth-Serving Organizations

| | |
|--|-------------|
| Initiative to help youth-serving organizations create, test, implement and sustain strategies that support character development in the young people they serve in chapters and affiliates throughout the nation | |
| (8 planning grants of \$100,000 each and 8 implementation grants ranging from \$15 million to \$30 million) | 195,800,000 |
| Big Brothers Big Sisters of America (Big Brothers and Big Sisters of America), Tampa, FL (2) | 22,600,000 |
| Boys & Girls Clubs of America, Atlanta, GA (2) | 30,100,000 |
| Girl Scouts of the United States of America, New York, NY (2) | 30,100,000 |

| | |
|---|------------|
| Girls Incorporated, New York, NY (2) | 15,100,000 |
| Junior Achievement USA, Colorado Springs, CO (2) | 22,600,000 |
| National 4-H Council (Formerly National 4-H Club Foundation, Inc.), Washington, DC (2) | 15,100,000 |
| National Boy Scouts of America Foundation, Irving, TX (2) | 30,100,000 |
| National Council of Young Men's Christian Associations of the United States of America (YMCA of the USA), Chicago, IL (2) | 30,100,000 |

College and Community Collaboration

Initiative to support colleges and universities in Indiana as they collaborate with organizations in their local communities to improve quality of life for their campuses and the neighborhoods, towns, cities and counties surrounding them. Implementation grants allocated between Community Development and Education divisions total \$302,664,000.

(13 grants)

| | |
|-----------------------------------|-------------|
| Education Division funding total: | |
| See the grants list on page 47 | 151,332,000 |

Fostering Character Through Children's Museums

Initiative to assist museums serving children and families in their efforts to initiate, expand or enhance programs and practices to promote character development. Implementation grants allocated between Community Development and Education divisions total \$38,487,250.

(15 grants)

| | |
|----------------------------------|------------|
| Education Division funding total | |
| See the grants list on pages 48 | 19,243,640 |

Marion County K-12 Private Schools Initiative

| | |
|--|-----------|
| Initiative to help private schools in Indianapolis (Marion County, Ind.) initiate, enhance or expand compelling programs and projects that show promise to improve their students' academic achievement and the prospects for post-secondary success | |
| (36 planning grants of up to \$50,000 each) | 1,739,150 |
| Al-Haqq Foundation (Al-Haqq Foundation Academy) | 50,000 |
| Apogee School, Inc. | 50,000 |
| Archdiocese of Indianapolis | 50,000 |
| Brebeuf Jesuit Preparatory School Inc. | 50,000 |
| Calvary Christian School | 50,000 |
| Cathedral Trustees Inc. (Cathedral High School) | 50,000 |
| Central Christian Academy Inc. | 50,000 |
| Classical Academy Inc. | 50,000 |
| Colonial Christian School Corporation of Indianapolis | 50,000 |
| Cornerstone Baptist Church (Cornerstone Baptist Academy) | 8,000 |



| | |
|---|--------|
| Covenant Christian Schools of Indianapolis Inc. (Covenant Christian High School) | 50,000 |
| The Crossing National Inc. | 50,000 |
| Damar Services Inc. | 50,000 |
| The Hasten Hebrew Academy of Indianapolis Inc. | 50,000 |
| Heritage Christian Schools Inc. | 50,000 |
| Hope Baptist Church (Chapel Hill Christian School) | 50,000 |
| Horizon Christian Fellowship Inc. (Horizon Christian School) | 50,000 |
| Hutson School Inc. (Fortune Academy) | 50,000 |
| Independence Academy of Indiana Inc. | 50,000 |
| Indiana District Lutheran Church MO Synod Inc. (Indiana District of the Lutheran Church-Missouri Synod) | 50,000 |
| Indianapolis Christian School System Inc. (Indy West Christian School) | 50,000 |
| The Indianapolis Muslim Community Association (MTI School of Knowledge) | 50,000 |
| International School of Indiana, Inc. | 50,000 |
| Legacy Learning Center Inc. | 50,000 |
| North American Division of Seventh-day Adventists | 50,000 |
| Oaks Academy Inc. | 50,000 |
| Orchard School Foundation | 50,000 |
| Park Tudor Foundation, Inc. | 50,000 |
| Providence Cristo Rey High School, Inc. | 50,000 |
| St. Richard's Episcopal School Inc. (St. Richard's School) | 50,000 |
| School for Community Learning Inc. | 38,150 |

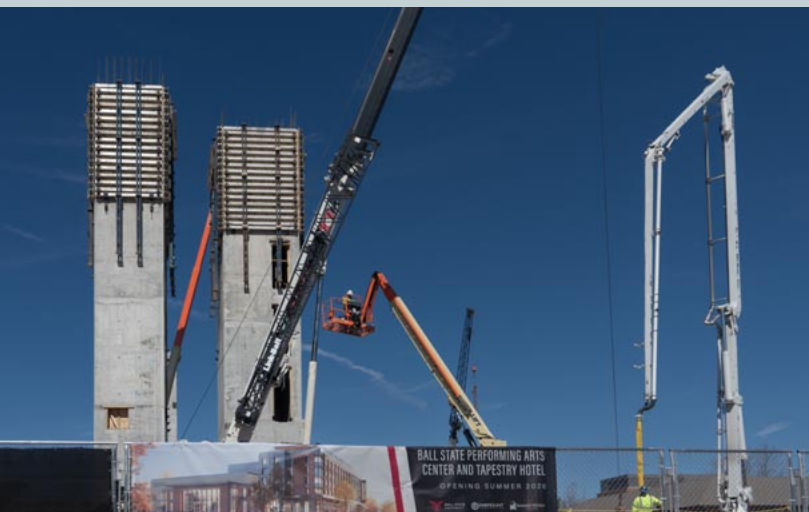
| | |
|--|--------|
| Shepherd Community Inc. (Shepherd Community Center) | 50,000 |
| Suburban Baptist Church (Suburban Christian School) | 50,000 |
| Sycamore School, Inc. | 50,000 |
| Trinity Fellowship Church of God (Trinity Christian School) | 43,000 |
| Turning Point Family Foundation | 50,000 |

Marion County K-12 Public Schools Initiative

Initiative to help public schools in Indianapolis (Marion County, Ind.) initiate, enhance or expand compelling programs and projects that show promise to improve their students' academic achievement and the prospects for post-secondary success

(43 planning grants of up to \$50,000 each) 2,150,000

| | |
|--|--------|
| ACE Preparatory Inc. | 50,000 |
| Adelante Schools Inc. | 50,000 |
| Alianza Community Schools (Monarca Academy) | 50,000 |
| Allegiant Preparatory (Allegiant Preparatory Academy) | 50,000 |
| Andrew J. Brown Charter School (Andrew J. Brown Academy) | 50,000 |
| Avondale Meadows Academy, Inc. (United Schools of Indianapolis) | 50,000 |
| Beech Grove City Schools | 50,000 |
| BELIEVE Schools Inc. | 50,000 |
| Christel House Academy, Inc. (Christel House Indianapolis) | 50,000 |



| | |
|--|--------|
| Circle City Preparatory Inc. | 50,000 |
| Damar Charter School, Inc. | 50,000 |
| Dynamic Minds Academy Inc. | 50,000 |
| Franklin Township Community School Corporation | 50,000 |
| Global Preparatory Academy Inc. | 50,000 |
| Goodwill Education Initiatives Inc. | 50,000 |
| Greater Educational Opportunities Foundation (Greater Educational Opportunities [GEO] Foundation) | 50,000 |
| Herron Classical Schools (Herron High School) | 50,000 |
| The Hope Academy Inc. | 50,000 |
| Indiana Math and Science Academy- Indianapolis Inc. (IMSA West) | 50,000 |
| Indianapolis Public Schools | 50,000 |
| Invent Learning Hub | 50,000 |
| Irvington Community School Inc. (Irvington Community Schools) | 50,000 |
| KIPP Indianapolis Inc. | 50,000 |
| Liberty Grove Schools Inc. | 50,000 |
| Matchbook Learning Schools of Indiana | 50,000 |
| Metropolitan School District of Decatur Township | 50,000 |
| Metropolitan School District of Lawrence Township | 50,000 |
| Metropolitan School District of Pike Township | 50,000 |
| Metropolitan School District of Warren Township | 50,000 |
| Metropolitan School District of Washington Township | 50,000 |
| Metropolitan School District of Wayne Township | 50,000 |
| Nature School Inc. | 50,000 |
| Neighborhood Charter Network Inc. | 50,000 |
| Paramount School of Excellence Inc. | 50,000 |
| PATH School Inc. | 50,000 |
| Perry Township Schools (Metropolitan School District of Perry Township) | 50,000 |
| Phalen Leadership Academies Indiana Inc. | 50,000 |
| Purdue Polytechnic High School of Indianapolis Inc. | 50,000 |
| Rooted School Inc. | 50,000 |

| | |
|---|--------|
| School Town of Speedway (Speedway Public Schools) | 50,000 |
| Southeast Neighborhood School of Excellence Inc. | 50,000 |
| Tindley Accelerated Schools Inc. | 50,000 |
| Victory College Prep Inc. | 50,000 |

Supporting the Learning and Development of Very Young Children

Grants to help organizations strengthen their efforts to improve early learning programs in the Indiana communities they serve

(7 grants) 26,954,307

| | |
|---|-----------|
| Community Coordinated Child Care of Southern Indiana (Building Blocks), Evansville, IN | 3,478,177 |
| Early Learning Indiana Inc., Indianapolis, IN | 5,000,000 |
| Metro United Way Inc., Louisville, KY | 3,647,500 |
| Porter County Community Foundation Inc., Valparaiso, IN | 5,000,000 |
| University of Notre Dame, Notre Dame, IN | 3,704,518 |
| Villages of Indiana, Inc., Bloomington, IN | 3,324,112 |
| Volunteers of America of Indiana, Inc. (Volunteers of America Ohio & Indiana), Indianapolis, IN | 2,800,000 |

Teacher Creativity Fellowship Program

Competitive program for renewal of Indiana's K-12 teachers, principals and assistant principals, school counselors, media specialists and librarians, and instructional coaches

(129 grants of up to \$15,000 each) 1,500,000

YOUTH PROGRAMMING

100 Black Men of Indianapolis Inc.

| | |
|---------------------------------------|---------|
| Indianapolis, IN | |
| Fundraising capacity | 50,000 |
| Program and general operating support | 255,000 |

Center for Leadership Development Inc.

| | |
|---------------------------|-----------|
| Indianapolis, IN | |
| General operating support | 1,000,000 |

Child Advocates Inc.

| | |
|---|---------|
| Indianapolis, IN | |
| Operating support and feasibility study | 800,000 |

Claude McNeal's Musical Theatre Training Program Inc.

| | |
|--|--------|
| Indianapolis, IN | |
| Feasibility study for executive transition and growth plans | 23,000 |

Crossroads of America Council Boy Scouts of America, Inc. (Scouting America, Crossroads of America Council)

Indianapolis, IN

Development of strategic plan for 2026-2028 50,000

Girls Incorporated of Greater Indianapolis (Girls Inc.)

Indianapolis, IN

Capacity-building support to engage a fund development consultant 50,000

Grantmakers for Education

Portland, OR

2024 operating support and membership dues 50,000

Indiana Afterschool Network

Indianapolis, IN

Operating support 559,000

Planning support to incorporate Science of Reading in out-of-school-time programs 50,000

Science of Reading in out-of-school-time programs 9,500,000

Indiana Black Expo Inc.

Indianapolis, IN

Youth and family programs 1,249,108

Indiana Children's Wish Fund (Indiana Wish)

Indianapolis, IN

Capacity building grant for strategic planning, volunteer management and staff professional development 50,000

Indiana Youth Institute, Inc.

Indianapolis, IN

Operating support and establishment of a statewide database 6,325,000

James Whitcomb Riley Memorial Association

Indianapolis, IN

Camp Riley pool renovation project 3,132,587

Junior Achievement of Central Indiana

Indianapolis, IN

Enhancement and expansion of JobSpark career exploration program 701,800

Marion County Commission on Youth, Inc. (MCCOY)

Indianapolis, IN

Mayor's Youth Leadership Council project 250,300

Operating support 325,000

St. Mary's Child Center Inc.

Indianapolis, IN

Support for strategic planning 40,000

Mentoring Youth for Post-Secondary Success

Capacity building grants to strengthen mentoring efforts at Indianapolis organizations that help prepare K-12 students for post-secondary success (7 grants of up to \$50,000 each) 346,000

The Bloom Project, Inc. 50,000

Burmese American Community Institute 50,000



| | |
|---|--------|
| Crown Community Development Corporation, Inc. | 50,000 |
| Eclectic Soul VOICES Corporation | 50,000 |
| Elevate Indianapolis, Inc. | 46,000 |
| Escala Foundation, Inc. | 50,000 |
| Starfish Inc. | 50,000 |

Summer Youth Program Fund

Grants for organizations in Indiana to support summer activities for Indianapolis (Marion County) youth

(192 grants ranging from \$1,450 to \$332,067 to support 237 programs) 3,276,337

| | |
|--|---------|
| Adult and Child Mental Health Center, Inc. (Adult & Child Health) | 13,000 |
| Agape Therapeutic Riding Resources Inc. (Agape Therapeutic Riding Center) | 3,600 |
| American Diabetes Association, Inc. | 15,000 |
| Artmix Inc. | 10,000 |
| Avondale Meadows Academy, Inc. (United Schools of Indianapolis) | 5,000 |
| AYS Inc. | 50,000 |
| Benjamin Harrison Presidential Site, Inc. | 6,500 |
| Big Brothers Big Sisters of Central Indiana, Inc. | 20,000 |
| Big Car Media Inc. | 7,000 |
| 100 Black Men of Indianapolis Inc. | 32,000 |
| The Bloom Project, Inc. | 15,000 |
| Bosma Visionary Opportunities Foundation Inc. | 2,000 |
| Boys & Girls Clubs of Indianapolis, Inc. | 142,250 |
| Brightwood Community Center | 16,000 |

| | |
|---|--------|
| Brooke's Place for Grieving Young People | 15,000 |
| Brookside Community Development Corporation | 15,000 |
| Burmese American Community Institute | 42,000 |
| Butler University | 5,000 |
| Camp To Belong Indiana Inc. | 10,000 |
| Camptown, Inc. | 32,500 |
| Castleton United Methodist Church | 3,000 |
| Catholic Charities Indianapolis, Inc. | 13,000 |
| Catholic Youth Organization, Camp Rancho Framasa, Inc. | 19,000 |
| Center for Leadership Development Inc. | 3,750 |
| Children's Bureau, Inc. (Firefly Children & Family Alliance) | 11,500 |
| The Children's Museum of Indianapolis, Inc. | 10,000 |
| Christamore House Inc. | 10,000 |
| Christel House Academy, Inc. (Christel House Indianapolis) | 7,000 |
| Claude McNeal's Musical Theatre Training Program Inc. | 8,740 |
| Coburn Place Safehaven II Inc. (Coburn Place Safe Haven) | 12,000 |
| Community Alliance of the Far Eastside Inc. (CAFE) | 23,000 |
| Community Assets, Inc. | 5,000 |
| Concord Center Association Inc. | 42,000 |
| Crooked Creek Community Development Corporation (Crooked Creek Northwest Community Development Corporation) | 5,000 |
| Crossroads of America Council Boy Scouts of America, Inc. (Scouting America, Crossroads of America Council) | 10,000 |



| | | | |
|---|---------|---|--------|
| Crossroads Rehabilitation Center, Inc. (Easterseals Crossroads) | 5,000 | Health and Science Innovations Inc. (Diversity & Innovation Institute – DNOVA) | 29,000 |
| Crown Community Development Corporation, Inc. | 15,000 | Hear Indiana Inc. | 15,000 |
| D R E A M Alive Inc. | 15,000 | Hemophilia of Indiana Inc. | 5,000 |
| Damar Services Inc. | 20,000 | Herron Classical Schools (Herron High School) | 5,000 |
| Dance Kaleidoscope Inc. | 1,500 | The Hope Academy Inc. (Hope Academy Inc.) | 13,000 |
| Dayspring Center, Inc. | 5,000 | Humane Society of Indianapolis Inc. (Indy Humane) | 6,500 |
| Deeply Ingrained, Inc. | 7,500 | libada Dancers Inc. (libada Dance Company) | 9,000 |
| Destiny Steps, Inc. | 5,000 | Immigrant Youth Soccer Team for Peace & Progress Inc. | 5,000 |
| Diabetic Youth Foundation of Indiana Inc. | 18,000 | Indiana Annual Conference of the United Methodist Church | 5,000 |
| DirectEmployers Institute, Inc. | 15,000 | Indiana Construction Roundtable Foundation Inc. | 8,000 |
| Drone Force Indiana | 3,000 | Indiana Deaf Camps Foundation Inc. | 8,000 |
| Dyslexia Institute of Indiana, Inc. | 15,000 | Indiana Golf Foundation Inc. | 7,000 |
| Earth Charter Indiana | 10,000 | Indiana Latino Institute, Inc. | 18,000 |
| East 10th Children and Youth Center, Inc. (East Tenth United Methodist Children and Youth Center) | 23,000 | Indiana State Museum Foundation, Inc. | 4,000 |
| Edna Martin Christian Center Inc. | 43,000 | Indiana University Foundation | 36,750 |
| El Sistema Indianapolis | 3,000 | Indiana Youth Group, Inc. | 10,000 |
| Elevate Indianapolis, Inc. | 15,000 | Indianapolis Art Center, Inc. (Indy Art Center) | 15,500 |
| The Englewood Christian Church Inc. | 8,000 | Indianapolis Chess Club & Scholastic Center Inc. | 2,250 |
| Englishton Park, Inc. | 11,000 | Indianapolis Children's Choir, Incorporated | 9,000 |
| Entrepreneurial Ventures in Education Inc. | 34,000 | Indianapolis First Baptist Church (First Baptist Church) | 15,000 |
| Escala Foundation, Inc. | 6,000 | Indianapolis Parks Foundation Inc. (Parks Alliance of Indianapolis) | 34,000 |
| Fay Biccard Glick Neighborhood Center at Crooked Creek, Inc. | 17,000 | Indianapolis Soap Box Derby Association Inc. | 11,900 |
| Felege Hiywot Center Inc. | 17,000 | Indianapolis Urban Youth Baseball & Softball, Inc. (Indianapolis RBI) | 10,000 |
| Fellowship of Christian Athletes | 4,000 | Indianapolis-Marion County Public Library Foundation Inc. | 10,000 |
| First Samuel Missionary Baptist Church Inc. | 2,800 | Indy Convergence Inc. | 2,500 |
| Flanner House of Indianapolis Inc. | 37,000 | Inner Beauty Program, Inc. | 8,000 |
| Footlite Musicals, Inc. | 1,500 | Jackson Center for Conductive Education Inc. | 4,500 |
| Freetown Village Inc. | 27,000 | Jameson, Inc. (Jameson Camp) | 40,000 |
| Freewheelin' Community Bikes, Inc. | 10,000 | The John H. Boner Community Center, Inc. (John Boner Neighborhood Centers) | 40,000 |
| George Washington HUB Club Inc. | 8,000 | Judah Ministries, Inc. (Judah Church of God in Christ) | 14,000 |
| Girl Scouts of Central Indiana Inc. | 10,000 | Keep Indianapolis Beautiful Inc. | 3,500 |
| Girl Talk LLC (Girl Talk Incorporated) | 5,000 | Kids Dance Outreach Inc. | 4,500 |
| Girls Incorporated of Greater Indianapolis (Girls Inc.) | 18,000 | Kids Voice of Indiana, Inc. (Kids' Voice of Indiana) | 8,000 |
| Girls Rock! Indianapolis, Inc. | 5,000 | La Plaza Inc. | 37,250 |
| Gleaners Food Bank of Indiana, Inc. | 206,615 | Ladies Under Construction, Inc. | 3,000 |
| Good News Mission Inc. (Good News Ministries) | 25,000 | Latinas Welding Guild Inc | 10,000 |
| Great Commission Church of God | 14,247 | Latino Youth Collective of Indiana Inc. | 24,000 |
| Groundwork Indy, Inc. | 17,000 | Lawrence United Methodist Church | 7,000 |
| Growing Places Indy, Inc. | 9,000 | Lighthouse Academies | 5,000 |
| Guidance Life Skills and Mentoring Inc. (G.L.A.M.) | 5,000 | Like A Lion | 6,000 |
| Happy Hollow Children's Camp, Inc. | 30,000 | Lillian Davis Foundation Inc. | 6,000 |
| Harrison Center for the Arts Inc. | 12,000 | Listen To Our Future | 5,000 |
| Hawthorne Social Service Association Inc. | 37,000 | Little Red Door Cancer Agency, Inc. | 7,500 |
| The Health and Hospital Corporation of Marion County | 14,667 | Lutan, Inc. | 3,000 |



| | |
|--|---------|
| Lutheran Child & Family Services of Indiana (Lutheran Child & Family Services of Indiana/Kentucky) | 15,000 |
| LYN House Incorporated | 2,700 |
| Madam Walker Legacy Center, Inc. | 9,000 |
| Marian University | 13,000 |
| Marion County Commission on Youth, Inc. (MCCOY) (2) | 392,067 |
| Martin Luther King Multi-Service Center Indianapolis Incorporated (MLK Center) | 40,000 |
| Mary Rigg Neighborhood Center Incorporated | 47,000 |
| The Mind Trust, Inc. (Mind Trust) | 15,000 |
| Mother Loves Garden, Inc. | 3,500 |
| Music for All Inc. | 11,500 |
| National Aviation Youth Resources Inc. (National Aviation Youth Resources Foundation Inc.) | 22,000 |
| National Inventors Hall of Fame, Inc. | 6,000 |
| National Junior Tennis & Learning of Indianapolis, Inc. | 12,000 |
| New Beginnings Church Inc. | 11,000 |
| New Direction Christian Church, Inc. | 4,500 |
| Nine 13 Inc. (Nine13sports) | 17,500 |
| NXG Youth Motorsports, Inc. | 10,000 |
| Oaks Academy Inc. | 10,000 |
| Outdoor Youth Exploration Academy Inc. | 8,000 |
| Outreach Inc. | 8,500 |
| Paramount School of Excellence Inc. | 12,000 |
| Partnerships for Lawrence Inc. (Arts for Lawrence) | 8,500 |
| Patachou Foundation, Inc. | 8,500 |
| Pathway to the Future Learning Center Inc. (Pathway Resource Center) | 14,000 |
| Peace Learning Center Inc. | 25,000 |
| People for Urban Progress | 6,000 |
| The Performing Arts Conservatory, Inc. | 3,120 |
| Philharmonic Orchestra of Indianapolis, Inc. | 8,000 |

| | |
|---|--------|
| Positive Character Girls Inc. | 3,500 |
| Pretty Passionate Hands Child Care, Inc. | 5,000 |
| Providence Cristo Rey High School, Inc. | 5,500 |
| Reach for Youth, Inc. | 15,000 |
| The Riley Center | 5,921 |
| River West Theatre Inc. (Fonseca Theatre Company) | 5,000 |
| Riviera Club Foundation Inc. | 5,000 |
| Ross Foundation | 5,000 |
| St. Richard's Episcopal School Inc. (St. Richard's School) | 37,000 |
| Saint Florian Center Incorporated (St. Florian Center) | 64,000 |
| The Salvation Army (Salvation Army Indiana Division) | 19,000 |
| Sea Scope, Incorporated | 5,000 |
| Second Helpings, Inc. | 5,000 |
| Shepherd Community Inc. (Shepherd Community Center) | 26,000 |
| SHEroes Inc. | 4,000 |
| Social Health Association of Indiana, Inc. (LifeSmart Youth, Inc.) | 20,000 |
| Soul Food Project, Inc. | 7,000 |
| Southeast Community Services, Inc. | 14,000 |
| Starfish Inc. | 12,000 |
| The Stem Connection | 24,000 |
| Stop the Violence Indianapolis Inc. | 15,000 |
| Storytelling Arts of Indiana | 6,000 |
| Symphonic Youth Orchestra of Greater Indianapolis Inc. | 5,800 |
| TeenWorks, Inc. | 10,000 |
| Trinity House Academy Inc. | 8,000 |
| University of Indianapolis | 19,000 |
| Urban Musical Theatre, Inc. | 6,500 |
| Villages of Indiana, Inc. | 15,000 |
| Warren Arts and Education Foundation, Inc. | 5,500 |
| Wayne Township Education Foundation Inc. | 7,000 |
| We Bloom Inc. | 5,000 |
| Westminster Neighborhood Services, Inc. | 25,000 |
| Winning Experiences Inc. | 8,000 |
| World Changers School of the Arts, Inc. | 4,000 |
| Writers' Center of Indiana (Indiana Writers Center) | 1,450 |
| Young Actors Theatre Inc. (React) | 8,500 |
| Young Audiences of Indiana, Inc. (Arts for Learning Indiana) | 35,000 |
| Young Men's Christian Association of Greater Indianapolis (YMCA of Indianapolis) | 54,054 |
| Youth Empowered, Inc. | 5,550 |
| Zion Hill M B Church Inc. (Zion Hill Missionary Baptist Church) | 20,356 |

Summer Youth Program Fund – Capital

Capital project grants for organizations to improve their capacity to conduct summer programs

(36 grants ranging from \$1,669 to \$45,000) 1,111,717

| | |
|--|--------|
| Agape Therapeutic Riding Resources Inc. (Agape Therapeutic Riding Center) | 25,000 |
| Artmix Inc. | 22,000 |
| Big Car Media Inc. | 36,656 |
| 100 Black Men of Indianapolis Inc. | 2,700 |
| Brookside Community Development Corporation | 45,000 |
| Burmese American Community Institute | 43,000 |
| Camptown, Inc. | 40,000 |
| Claude McNeal's Musical Theatre Training Program | 25,864 |
| Coburn Place Safehaven II Inc. (Coburn Place Safe Haven) | 45,000 |
| Concord Center Association Inc. | 3,122 |
| Damar Services Inc. | 21,054 |
| Dayspring Center, Inc. | 45,000 |
| DirectEmployers Institute, Inc. | 43,029 |
| East 10th Children and Youth Center, Inc. (East Tenth United Methodist Children and Youth Center) | 33,000 |
| The Englewood Christian Church Inc. | 11,010 |
| Englishton Park, Inc. | 44,846 |
| Flanner House of Indianapolis Inc. | 29,950 |
| Girl Scouts of Central Indiana Inc. | 30,000 |
| Good News Mission Inc. (Good News Ministries) | 45,000 |
| Great Commission Church of God | 41,895 |
| Harrison Center for the Arts Inc. | 45,000 |

| | |
|---|--------|
| Health and Science Innovations Inc. (Diversity & Innovation Institute (DNOVA Institute)) | 45,000 |
| The Hope Academy Inc. | 22,000 |
| Indiana State Museum Foundation, Inc. | 5,745 |
| Indianapolis Ballet, Inc. | 1,669 |
| Marian University | 44,950 |
| Martin Luther King Multi-Service Center Indianapolis Incorporated (MLK Center) | 41,977 |
| Nine 13 Inc. (Nine13sports) | 32,078 |
| Oaks Academy Inc. | 22,500 |
| Partnerships for Lawrence Inc. (Arts for Lawrence) | 23,000 |
| Peace Learning Center Inc. | 45,000 |
| Reach for Youth, Inc. | 3,795 |
| Saint Florian Center Incorporated (St. Florian Center) | 45,000 |
| Social Health Association of Indiana, Inc. (LifeSmart Youth, Inc.) | 11,877 |
| The Stem Connection | 45,000 |
| Zion Hill M B Church Inc. (Zion Hill Missionary Baptist Church) | 44,000 |

Subtotal

| | |
|---|-------------|
| Education Division Grants | 687,447,634 |
| Education Youth Programming Grants | 29,194,849 |
| Education Division Discretionary Grants | 124,750 |

Total

| | |
|---------------------------|-------------|
| Education Division Grants | 716,767,233 |
|---------------------------|-------------|



RELIGION GRANTS

24

DOLLAR AMOUNT APPROVED IN 2024

American Theological Library Association (ATLA)

Chicago, IL

| | |
|----------------------------|---------|
| Support for Project Eureka | 800,000 |
|----------------------------|---------|

Archdiocese of Indianapolis

Indianapolis, IN

| | |
|--|---------|
| Support for National Eucharistic Congress 2024 | 500,000 |
|--|---------|

Association of Theological Schools in the United States and Canada (Association of Theological Schools)

Pittsburgh, PA

| | |
|--|-----------|
| Support for coordination program of Pathways For Tomorrow Initiative | 8,000,000 |
|--|-----------|

Center for Interfaith Cooperation Inc.

Indianapolis, IN

| | |
|--|--------|
| Support to develop and implement an executive leadership transition plan | 50,000 |
|--|--------|

Christian Theological Seminary

Indianapolis, IN

| | |
|--|------------|
| Support for Lilly Endowment Indiana and National Clergy Renewal Programs | 14,100,000 |
|--|------------|

The Conversation US Inc.

Waltham, MA

| | |
|---|-----------|
| Continued support for Global Religion Journalism Initiative | 5,894,295 |
|---|-----------|

Council of Independent Colleges

Washington, DC

| | |
|--|------------|
| Supplemental support for Network for Vocation in Undergraduate Education program | 19,980,000 |
|--|------------|

Fund for Theological Education, Inc.

Decatur, GA

| | |
|---|-----------|
| Continued support for Forum for Theological Exploration | 6,500,000 |
|---|-----------|

The Gift of Black Theological Education and Black Faith Traditions Collaborative, Inc. (The Gift Collaborative)

Philadelphia, PA

| | |
|---------------------------------------|-----------|
| Support for capacity building project | 4,000,000 |
|---------------------------------------|-----------|

The Greater Washington Educational Telecommunications Association, Inc. (WETA)

Arlington, VA

| | |
|--|---------|
| Support for "The American Revolution" documentary film series (a \$1,750,000 grant shared with the Education Division) | 875,000 |
|--|---------|

Indiana Leadership Prayer Breakfast, Inc.

Indianapolis, IN

| | |
|--|--------|
| Partial support for 2024 Indiana Leadership Prayer Breakfast | 10,000 |
|--|--------|

Indiana University Foundation

Bloomington, IN

| | |
|---|---------|
| Continued support for Spirit & Place Festival | 600,000 |
|---|---------|

| | |
|---|-----------|
| Continued support for the Association of Religion Data Archives project | 3,399,432 |
|---|-----------|

| | |
|------------------------------|---------|
| Spirit & Place Festival 2024 | 170,383 |
|------------------------------|---------|

Institute for Ecumenical and Cultural Research

Collegeville, MN

Continued support for the Ecclesial Literature Project 1,164,214

Lipscomb University

Nashville, TN

Continued partial support for No Small Endeavor public media project 500,000

National Trust for Historic Preservation in the United States

Washington, DC

Continued support for Preserving Black Churches project 40,000,000

Supplemental support for National Fund for Sacred Places program 27,237,599

Partners for Sacred Places Inc.

Philadelphia, PA

Supplemental support for National Fund for Sacred Places program 7,877,956

Religion News Foundation

Columbia, MO

Continued support for Global Religion Journalism Initiative 2,997,250

Samuel DeWitt Proctor Conference Inc.

Chicago, IL

Support for capacity building project 2,500,000

Smithsonian Institution

Washington, DC

Celebrating America's 250th project 40,000,000

University of Notre Dame

Notre Dame, IN

Support for initial phase of Faith-Based Frameworks for AI Ethics project 539,431

Wabash College

Crawfordsville, IN

Continued support for Wabash Center for Teaching and Learning in Theology and Religion 12,500,000

Wake Forest University

Winston-Salem, NC

Supplemental support for Educating Character Initiative (a \$12,478,193 grant shared with the Education Division) 6,239,097

Communications Capacity Building Initiative for Major Programs in Religion

Grants to strengthen the communication strategies and practices of select programs in religion to help enhance their abilities to share insights and stories about their programs with constituents and wider public audiences

(4 grants) 3,276,063

Indiana Wesleyan University, Marion, IN 494,063

Indianapolis Center for Congregations Inc., Indianapolis, IN 1,782,000

Institute for Ecumenical and Cultural Research, Collegeville, MN 500,000

Princeton Theological Seminary, Princeton, NJ 500,000

Compelling Preaching Initiative

Support to help organizations representing diverse Christian traditions develop new and/or enhance existing programs to improve the quality of preaching among preachers and aspiring preachers

(29 grants ranging from \$819,654 to \$1.25 million; one grant of \$3,056,390 to Calvin University to fund a coordination program for the initiative) 38,181,401

Allen Temple Leadership Institute, Oakland, CA 1,250,000

America Evangelical University, Gardena, CA 1,250,000

Baptist University of the Americas, San Antonio, TX 1,199,723

Barclay College, Haviland, KS 1,250,000

Calvin University, Grand Rapids, MI 3,056,390

Center for Public Justice, Alexandria, VA 1,249,834

Chicago Theological Seminary Board of Directors, Chicago, IL 1,184,857

Denver Seminary, Littleton, CO 1,247,320

Ecclesia Ministries Inc., Boston, MA 1,250,000



| | |
|---|-----------|
| Georgia Central University, Inc., Atlanta, GA | 1,250,000 |
| Grace Schools (Grace College), Winona Lake, IN | 1,250,000 |
| Howard University, Washington, DC | 1,250,000 |
| Ignatian Resource Center (Ignatian Spirituality Center), Seattle, WA | 819,654 |
| Insight for Living, Frisco, TX | 1,249,457 |
| Lexington Theological Seminary, Lexington, KY | 1,250,000 |
| Mahibere Kidusan Coordinating Center in North America, Silver Spring, MD | 1,125,000 |
| Massachusetts Council of Churches, Boston, MA | 1,248,990 |
| Midwestern Baptist Theological Seminary, Kansas City, MO | 1,250,000 |
| North Central University, Minneapolis, MN | 1,250,000 |
| Palm Beach Atlantic University, Inc., West Palm Beach, FL | 1,250,000 |
| Pentecostal Churches of the Apostolic Faith International, Louisville, KY | 1,250,000 |
| Pittsburgh Theological Seminary of the United Presbyterian Church in the United States of America, Pittsburgh, PA | 1,078,875 |
| St. Paul's Benevolent, Educational and Missionary Institute, Inc. (The Passionist Missionaries), Jamaica, NY | 1,250,000 |
| Southeastern Baptist Theological Seminary, Wake Forest, NC | 1,250,000 |
| Street Psalms, Tacoma, WA | 1,250,000 |
| Taylor University, Inc., Upland, IN | 1,249,823 |

| | |
|---|-----------|
| Universidad Teologica del Caribe Inc., Trujillo Alto, PR | 971,484 |
| Virginia Union University, Richmond, VA | 1,250,000 |
| World Mission University, Los Angeles, CA | 1,250,000 |
| Young Life, Colorado Springs, CO | 1,249,994 |

Ministry in Rural Areas and Small Towns Initiative

Initiative to help organizations across the United States provide resources to help churches in rural areas and small towns enhance the vitality of their ministries and strengthen the leadership of the pastors and lay leaders who guide them

(20 planning grants ranging from \$25,800 to \$50,000 and 20 implementation grants ranging from \$1,499,674 to \$7.5 million)

| | |
|---|-----------|
| American Baptist Theological Seminary (American Baptist College), Nashville, TN (2) | 2,049,994 |
| Andrews University, Berrien Springs, MI (2) | 6,376,224 |
| Ashland University, Ashland, OH (2) | 2,514,647 |
| Catholic Church Extension Society of the United States of America (Catholic Extension), Chicago, IL (2) | 7,541,000 |
| Catholic Rural Life, St. Paul, MN (2) | 5,049,265 |
| Center for Rural Strategies, Inc., Whitesburg, KY (2) | 1,548,923 |
| Episcopal Theological Seminary of the Southwest (Seminary of the Southwest), Austin, TX (2) | 5,050,000 |



| | |
|--|-----------|
| Evangel University of the Assemblies of God, Springfield, MO (2) | 7,550,000 |
| Grove City College, Grove City, PA (2) | 5,049,271 |
| Hood Theological Seminary, Salisbury, NC (2) | 1,550,000 |
| Indiana University Foundation, Bloomington, IN (2) | 1,475,240 |
| Louisville Presbyterian Theological Seminary, Louisville, KY (2) | 5,050,000 |
| Mexican American Catholic College, San Antonio, TX (2) | 6,340,000 |
| Pepperdine University, Malibu, CA (2) | 7,550,000 |
| Rural Economic Development Center, Inc. (NC Rural Center), Raleigh, NC (2) | 6,438,592 |
| Rural Home Missionary Association Inc., Morton, IL (2) | 3,219,556 |
| Samford University, Birmingham, AL (2) | 5,045,000 |
| University of the Ozarks, Clarksville, AR (2) | 4,903,603 |
| Wartburg Theological Seminary, Dubuque, IA (2) | 7,450,000 |
| Wheaton College Billy Graham Center, Wheaton, IL (2) | 5,050,000 |

National Christian Faith and Life Storytelling Initiative

Grants to help organizations unlock and tell compelling stories that portray the vibrancy and hope of Christian faith and life to inspire and help people from a wide variety of backgrounds to come to know and love God

(9 planning grants ranging from \$47,853 to \$50,000 and 13 implementation grants ranging from \$950,000 to \$5 million)

| | |
|--|-----------|
| America Press, Inc. (America Media), New York, NY (2) | 5,050,000 |
| Austin Presbyterian Theological Seminary, Austin, TX (2) | 5,050,000 |
| Catholic Charities USA, Alexandria, VA | 4,998,541 |
| Christianity Today International, Wheaton, IL (2) | 5,047,853 |
| Eastern University, St. Davids, PA (2) | 4,222,305 |
| Fuller Theological Seminary, Pasadena, CA (2) | 5,050,000 |
| MPT Foundation Inc., Owings Mills, MD | 950,000 |
| National Association of Evangelicals, Washington, DC (2) | 5,050,000 |
| National Council of the Churches of Christ in the United States of America, Washington, DC (2) | 5,050,000 |
| Praxis Inc., New York, NY | 5,000,000 |
| The Christian Century, Chicago, IL | 4,663,146 |
| Trinity United Church of Christ, Chicago, IL (2) | 5,050,000 |
| Union Theological Seminary, New York, NY (2) | 5,050,000 |



National Initiative to Address Economic Challenges Facing Pastoral Leadership

Initiative to help national and regional church-related organizations implement innovative projects designed to reduce or alleviate the economic challenges that impair the ability of pastors to lead congregations effectively. This is the fourth round of grantmaking in this initiative.

(13 grants up to \$1.25 million each and one \$3,685,256 grant to the Indianapolis Center for Congregations to support a coordination program for the initiative)

| | |
|---|-----------|
| Anglican Church in North America, Ambridge, PA | 1,250,000 |
| Christian & Missionary Alliance, Reynoldsburg, OH | 1,243,000 |
| Church of God in Christ Inc., Memphis, TN | 1,250,000 |
| The Gathering Place Church, Orlando, FL | 1,250,000 |
| Guidestone Financial Resources of the Southern Baptist Convention, Dallas, TX | 1,250,000 |
| Iglesia De Dios Pentecostal Mi Sede Internacional Corp., San Juan, PR | 1,250,000 |
| Indianapolis Center for Congregations Inc., Indianapolis, IN | 3,685,256 |
| International Pentecostal Holiness Church Inc., Oklahoma City, OK | 1,250,000 |
| Lutheran Church Extension Fund-MO Synod, St. Louis, MO | 1,250,000 |



| | |
|---|-----------|
| Minnesota Iowa Baptist Conference (Converge North Central), Pine River, MN | 1,250,000 |
| National Hispanic Christian Leadership Conference, Bethlehem, PA | 1,250,000 |
| North American Division of Seventh-day Adventists, Columbia, MD | 1,250,000 |
| Orthodox Church in America, Alexandria, VA | 1,250,000 |
| Pentecostal Assemblies of the World Inc., Indianapolis, IN | 1,250,000 |

National Initiative to Strengthen Hispanic Pastoral Leaders and Congregations

Initiative to support and strengthen Hispanic pastoral leaders and congregations as well as to build and expand the capacities of organizations and networks that support their ministries

(19 planning grants ranging from \$41,100 to \$100,000 and 17 implementation grants ranging from \$1,499,997 to \$6,791,593)

| | |
|--|-----------|
| American Baptist Home Mission Society, King of Prussia, PA (2) | 1,550,000 |
| Christian & Missionary Alliance, Reynoldsburg, OH (2) | 1,546,079 |
| Church of God, Cleveland, TN (2) | 1,550,000 |
| Convencion Bautista Hispana de Texas, San Antonio, TX (2) | 1,541,100 |
| Garrett-Evangelical Theological Seminary, Evanston, IL (2) | 6,891,593 |
| Gathering Place Church Inc., Orlando, FL | 1,500,000 |
| General Commission on Religion and Race, Washington, DC (2) | 1,550,000 |
| General Council of the Assemblies of God, Springfield, MO (2) | 1,550,000 |
| Hispanic Access Foundation, Washington, DC (2) | 1,549,942 |
| Iglesia De Dios Pentecostal Mi Sede Internacional Corp., San Juan, PR (2) | 1,550,000 |
| International Church of the Foursquare Gospel, Los Angeles, CA (2) | 1,550,000 |
| Latin American Bible Institute College, La Puente, CA (2) | 1,549,958 |
| Latino Christian National Network Inc, Concord, VA | 47,040 |
| Mission Talk, Inc., Clermont, FL | 50,000 |

| | |
|---|-----------|
| National Alliance for Hispanic Families, Houston, TX (2) | 1,550,000 |
| National Hispanic Christian Leadership Conference, Bethlehem, PA (2) | 1,550,000 |
| National Latino Evangelical Coalition, Inc., Orlando, FL | 50,000 |
| North American Division of Seventh-day Adventists, Columbia, MD (2) | 1,550,000 |
| Nueva Esperanza (Esperanza), Philadelphia, PA (2) | 1,550,000 |
| Seminario Evangelico de PR (Seminario Evangelico de Puerto Rico), San Juan, PR (2) | 1,549,957 |

National Youth and Young Adult Initiative on Faith and Service

Initiative to help organizations nurture and deepen the faith of Christian young people by engaging them in intentional acts of service and reflection about the meaning of service in their lives

(8 planning grants ranging from \$49,991 to \$50,000 and 12 implementation grants ranging from \$1 million to \$10 million)

| | |
|--|------------|
| Appalachia Service Project, Inc., Johnson City, TN | 5,000,000 |
| Azusa Pacific University, Azusa, CA | 5,000,000 |
| Boston College Trustees, Chestnut Hill, MA (2) | 10,050,000 |
| Center for Youth Ministry Training, Brentwood, TN | 4,903,808 |
| Fuller Theological Seminary, Pasadena, CA (2) | 10,050,000 |
| Leadership Foundations, Tacoma, WA (2) | 5,050,000 |
| National Federation for Catholic Youth Ministry, Inc., Washington, DC | 5,000,000 |
| Orthodox Volunteer Corps, Pittsburgh, PA (2) | 1,050,000 |
| Project Transformation National, Dallas, TX (2) | 4,300,000 |
| Together Chicago, Inc., Chicago, IL (2) | 5,050,000 |
| University of Notre Dame, Notre Dame, IN (2) | 10,049,988 |
| YouthFront, Inc., Kansas City, KS (2) | 5,050,000 |

Nurturing Children Through Worship and Prayer

Initiative to help organizations develop new or enhance and expand existing programs that support congregations as they design corporate worship services and prayer practices that more intentionally and fully engage children

(91 grants ranging from \$126,845 to \$1,250,000 and one \$4,200,210 grant to Indiana Wesleyan University to support a coordination program for the initiative)

| | |
|---|-----------|
| Adult & Teen Challenge of Texas, San Antonio, TX | 1,199,000 |
| American Baptist Home Mission Society, King of Prussia, PA | 1,250,000 |
| Asbury Theological Seminary, Wilmore, KY | 1,210,635 |
| Austin Presbyterian Theological Seminary, Austin, TX | 1,250,000 |
| Azusa Pacific University, Azusa, CA | 1,249,818 |

| | | | |
|---|-----------|--|-----------|
| Baptist Grove Church Inc., Raleigh, NC | 1,250,000 | Division of Homeland Ministry (Disciples Home Missions), Indianapolis, IN | 1,240,000 |
| Biola University, Inc., La Mirada, CA | 1,019,782 | Dordt University, Sioux Center, IA | 1,250,000 |
| Board of Discipleship of the United Methodist Church (Discipleship Ministries), Nashville, TN | 1,250,000 | Duke University, Durham, NC | 1,250,000 |
| Boston College Trustees, Chestnut Hill, MA | 971,000 | Engaging Disability With The Gospel Inc., Brandon, MS | 1,250,000 |
| Bridgeport Roman Catholic Diocesan Corp. Catholic Center (Catholic Diocese of Bridgeport), Bridgeport, CT | 1,237,000 | Episcopal Diocese of Indianapolis, Indianapolis, IN | 1,250,000 |
| Catholic Diocese of Austin, Austin, TX | 1,250,000 | Episcopal Diocese of North Carolina, Raleigh, NC | 1,250,000 |
| Catholic Diocese of Dallas, Dallas, TX | 1,022,357 | The Episcopal Diocese of Virginia, Richmond, VA | 1,248,768 |
| Center for Youth Ministry Training, Brentwood, TN | 1,249,965 | Evangelical Covenant Church, Chicago, IL | 1,250,000 |
| Central Christian College of the Bible, Moberly, MO | 1,245,160 | Evangelical Lutheran Church in America, Chicago, IL | 1,250,000 |
| Christian & Missionary Alliance, Reynoldsburg, OH | 1,250,000 | FBCA Foundation, Inc. (First Baptist Church of Asheville), Asheville, NC | 1,250,000 |
| Christian Theological Seminary, Indianapolis, IN | 909,871 | First Congregational Church UCC (First Congregational Church of Bridgton, United Church of Christ), Bridgton, ME | 1,250,000 |
| Concordia Seminary, St. Louis, MO | 762,497 | Flagler College Inc., St. Augustine, FL | 1,250,000 |
| Convencion Bautista Hispana de Texas, San Antonio, TX | 1,249,884 | Focus on the Family, Colorado Springs, CO | 511,415 |
| Cooperative Baptist Fellowship Inc., Decatur, GA | 1,250,000 | For The Children, Santa Ana, CA | 1,250,000 |
| Dagmit Debre Libanos St Teklehaimanot Ethiopian Tewahido Church, Watertown, MA | 836,385 | Fresno Pacific University, Fresno, CA | 1,179,040 |





| | |
|--|-----------|
| The General Synod Council of the Reformed Church in America (Reformed Church in America), Grand Rapids, MI | 1,250,000 |
| Global Impact, Alexandria, VA | 1,250,000 |
| Greek Orthodox Archdiocese of America, New York, NY | 1,250,000 |
| Hispanic Access Foundation, Washington, DC | 1,155,267 |
| Holy Resurrection Orthodox Church, Allston, MA | 493,010 |
| Impact Ministries International (IMPACT Ministry Training Center), Rockaway, NJ | 1,250,000 |
| Indiana Wesleyan University, Marion, IN | 4,200,210 |
| Instituto de Formacion Fe y Vida (Instituto Fe Y Vida), Romeoville, IL | 1,250,000 |
| Kidz at Heart International, Mesa, AZ | 1,250,000 |
| La Crosse Area Synod of the Evangelical Lutheran Church in America, La Crosse, WI | 1,250,000 |
| Lake Union Conference of Seventh-day Adventist Church, Berrien Springs, MI | 1,217,260 |
| Latin American Theological Seminary, La Puente, CA | 980,210 |
| Lee University, Cleveland, TN | 970,268 |
| Lutheran Church-Missouri Synod, St. Louis, MO | 750,000 |
| Mahibere Kidusan Coordinating Center in North America, Silver Spring, MD | 1,250,000 |
| Mars Hill Bible Church, Grandville, MI | 831,288 |
| Ministry Council of the Cumberland Presbyterian Church, Cordova, TN | 1,250,000 |
| Missouri Conference of the United Methodist Church, Columbia, MO | 1,250,000 |
| Movement West Michigan, Holland, MI | 576,000 |
| National Lutheran Choir Corporation, St. Paul, MN | 1,122,258 |
| North Carolina Synod of the Evangelical Lutheran Church in America, Salisbury, NC | 608,050 |
| Oak Park Church, Inc. (Oak Park Pentecostals), Richmond, IN | 1,250,000 |

| | |
|--|-----------|
| Open Door Presbyterian Church Charitable Trust, Herndon, VA | 1,171,240 |
| Our Saviour's Lutheran Church, Minneapolis, MN | 1,244,440 |
| The Parish of Calvary-St. George's, New York, NY | 1,249,750 |
| Pentecostal Churches of the Apostolic Faith International, Louisville, KY | 1,250,000 |
| Presbyterian Association of Musicians, Louisville, KY | 1,209,973 |
| Presbyterian Publishing Corporation, Louisville, KY | 1,250,000 |
| Presbyterian Theological Seminary in America, Santa Fe Springs, CA | 1,250,000 |
| Protestant Episcopal Church in the Diocese of Los Angeles (Episcopal Diocese of Los Angeles), Los Angeles, CA | 1,245,167 |
| Protestant Episcopal Church in the Diocese of West Virginia (Episcopal Diocese of West Virginia), Charleston, WV | 1,250,000 |
| Protestant Episcopal Theological Seminary in Virginia (Virginia Theological Seminary), Alexandria, VA | 1,250,000 |
| Providence College, Providence, RI | 1,094,746 |
| RBC Ministries (Our Daily Bread Ministries), Grand Rapids, MI | 1,250,000 |
| Real Resources, Inc., Golden Valley, MN | 1,143,958 |
| Redeemer City to City, New York, NY | 1,250,000 |
| Rio Texas Conference (Rio Texas Conference of the United Methodist Church), San Antonio, TX | 1,250,000 |
| St. Andrew Lutheran Church, Eden Prairie, MN | 1,250,000 |
| Samford University, Birmingham, AL | 1,250,000 |
| Seton Catholic Schools Inc., St. Francis, WI | 1,250,000 |
| Simmons College of Kentucky Inc., Louisville, KY | 126,845 |
| South Carolina Conference of the United Methodist Church, Columbia, SC | 1,110,305 |
| South Dakota Synod of the Evangelical Lutheran Church in America, Sioux Falls, SD | 1,224,172 |
| Southeastern Pennsylvania Synod of the Evangelical Lutheran Church in America, Philadelphia, PA | 1,249,933 |
| Trustees of Boston University (Boston University), Boston, MA | 1,250,000 |
| The Trustees of Wheaton College (Wheaton College), Wheaton, IL | 1,250,000 |
| Union Presbyterian Seminary, Richmond, VA | 1,250,000 |
| United Methodist Church Methodist Publishing House (United Methodist Publishing House), Nashville, TN | 1,250,000 |
| University of Dayton, Dayton, OH | 1,192,953 |
| University of the Incarnate Word, San Antonio, TX | 1,250,000 |
| Virginia Annual Conference of the United Methodist Church, Glen Allen, VA | 1,250,000 |
| Wesley Theological Seminary of the Methodist Church, Washington, DC | 1,250,000 |
| Wesleyan Church Corporation, Fishers, IN | 1,250,000 |

| | | | |
|--|-----------|---|-----------|
| Western District Conference of Mennonite Church USA, North Newton, KS | 677,730 | Canterbury Shaker Village Inc., Canterbury, NH (2) | 2,600,000 |
| Western North Carolina Conference of the United Methodist Church, Huntersville, NC | 1,100,000 | Chicago Architecture Foundation (Chicago Architecture Center), Chicago, IL (2) | 2,600,000 |
| Westminster Presbyterian Church of Oklahoma City, Oklahoma City, OK | 1,211,022 | Chicago Historical Society, Chicago, IL | 2,499,992 |
| Yvette A. Flunder Foundation, Inc., Oakland, CA | 1,250,000 | Clemente Soto Velez Cultural & Education Center Inc. (The Clemente), New York, NY (2) | 2,600,000 |



Religion and Cultural Institutions Initiative

Initiative to help museums, libraries, historic sites and other cultural institutions across the United States develop exhibitions and educational programs that fairly and accurately portray the role religion has played and continues to play in the U.S. and around the world

(81 grants: 36 planning grants ranging from \$65,000 to \$100,000; 45 implementation grants ranging from \$1,023,140 to \$2.5 million to help organizations new to the initiative launch projects or programs and to help organizations that received funding in a previous round of the initiative enhance their work or develop new projects or programs)

| | |
|--|-----------|
| American Writers Museum, Chicago, IL (2) | 2,600,000 |
| Arch Street Meeting House Preservation Trust, Philadelphia, PA (2) | 1,150,000 |
| Baylor University, Waco, TX (2) | 2,562,486 |

| | |
|--|-----------|
| Conner Prairie Museum Inc., Fishers, IN | 2,500,000 |
| Delaware Art Museum, Wilmington, DE (2) | 2,600,000 |
| Eiteljorg Museum of American Indians and Western Art Inc., Indianapolis, IN | 2,500,000 |
| Field Museum of Natural History, Chicago, IL | 1,904,881 |
| Hancock Shaker Village Inc., Pittsfield, MA (2) | 2,440,700 |
| Heard Museum, Phoenix, AZ | 2,500,000 |
| Historical Society of Delaware (Delaware Historical Society), Wilmington, DE (2) | 1,123,140 |
| Lower East Side Tenement Museum (Tenement Museum), New York, NY (2) | 2,600,000 |
| Marquette University, Milwaukee, WI (2) | 2,542,104 |
| Maryland Center for History and Culture, Baltimore, MD (2) | 2,600,000 |
| Montpelier Foundation, Orange, VA (2) | 2,599,996 |

| | |
|--|-----------|
| Muhammad Ali Museum and Education Center (Muhammad Ali Center), Louisville, KY | 100,000 |
| Museum at Eldridge Street, New York, NY (2) | 2,600,000 |
| Museum of Fine Arts (Museum of Fine Arts, Boston), Boston, MA | 2,500,000 |
| The Museum of Fine Arts of Houston (Museum of Fine Arts, Houston), Houston, TX | 2,500,000 |
| National Building Museum, Washington, DC (2) | 2,600,000 |
| National Juneteenth Museum, Fort Worth, TX (2) | 2,600,000 |
| National Park Foundation, Washington, DC (2) | 2,600,000 |
| National Women's History Museum, Washington, DC (2) | 2,600,000 |
| National WWI Museum and Memorial, Kansas City, MO | 2,500,000 |
| National Yiddish Book Center Inc. (The Yiddish Book Center), Amherst, MA (2) | 2,588,152 |
| New Orleans African American Museum of Art Culture and History (New Orleans African American Museum), New Orleans, LA | 100,000 |
| Newberry Library (The Newberry), Chicago, IL (2) | 2,256,078 |
| North Carolina Museum of Art Foundation Inc., Raleigh, NC (2) | 2,600,000 |
| Omaha Discovery Trust (Kiewit Luminarium), Omaha, NE (2) | 2,599,079 |
| Pepperdine University, Malibu, CA (2) | 2,599,510 |
| Presbyterian Church (U.S.A.), A Corporation, Louisville, KY (2) | 2,526,391 |
| Rubin Museum of Art, New York, NY | 100,000 |
| Saint Georges Philadelphia United Methodist Church (Historic St. George's United Methodist Church), Philadelphia, PA (2) | 2,599,427 |
| San Antonio African American Community Archive and Museum, San Antonio, TX (2) | 2,597,809 |
| Shakertown at Pleasant Hill Kentucky Inc. (Shaker Village of Pleasant Hill), Harrodsburg, KY | 2,500,000 |
| Shelburne Museum Incorporated, Shelburne, VT (2) | 2,600,000 |
| Sing Sing Prison Museum, Ossining, NY (2) | 2,600,000 |
| Sixteenth Street Baptist Church Inc., Birmingham, AL (2) | 2,600,000 |
| Smithsonian Institution, Washington, DC (3) | 5,100,000 |
| Society of Kings Chapel (King's Chapel, Parish House), Boston, MA (2) | 2,600,000 |
| Southern Methodist University, Dallas, TX (2) | 2,600,000 |
| The UCLA Foundation, Los Angeles, CA | 2,500,000 |
| University of Chicago, Chicago, IL (2) | 2,546,682 |
| University of Notre Dame du Lac, Notre Dame, IN | 2,500,000 |



Strengthening Ministries with Youth Initiative

Support for programs that help congregations and youth ministry organizations design and test new models for ministries with middle and high school youth, ages 12 to 18

| | |
|---|-----------|
| Baylor University, Waco, TX | 1,000,000 |
| Fuller Theological Seminary, Pasadena, CA | 2,000,000 |

Thriving Congregations Initiative

Initiative to help organizations working with congregations strengthen their ministries so they can better help people deepen their relationships with God, enhance their connections with each other and contribute to the flourishing of their communities and the world. Grants are supporting efforts to implement new projects and programs and to sustain efforts at organizations funded in a previous round of the initiative.

Implementation

| | |
|--|------------|
| (28 grants ranging from \$870,000 to \$1,250,000) | 34,483,138 |
| ABC of the Rochester Genesee Region (American Baptist Churches of the Rochester/Genesee Region), Rochester, NY | 1,250,000 |
| Catherine of Siena Institute Inc., Colorado Springs, CO | 1,250,000 |
| Catholic Information Center, Grand Rapids, MI | 1,250,000 |
| City of God Inc. (City of God Ministries International), Charlotte, NC | 1,250,000 |
| Episcopal Diocese of Western Michigan (Episcopal Diocese of the Great Lakes), Grand Rapids, MI | 1,249,858 |
| Episcopal House of Prayer, Collegeville, MN | 1,249,999 |
| Fellowship Southwest, Dallas, TX | 1,250,000 |
| Foundation for Evangelism, Lake Junaluska, NC | 1,250,000 |
| Franconia Mennonite Conference (Mosaic Mennonite Conference), Lansdale, PA | 1,250,000 |
| Gwynedd Mercy University, Gwynedd Valley, PA | 1,249,972 |

| | |
|--|------------|
| Heartland Church Inc., Fishers, IN | 1,249,995 |
| Hispanic Access Foundation, Washington, DC | 1,249,470 |
| Hope College, Holland, MI | 1,250,000 |
| Kingdom Partners, Chattanooga, TN | 1,250,000 |
| Live Church, St. Louis, MO | 1,245,526 |
| Mission Talk, Inc., Clermont, FL | 1,250,000 |
| National Mission Training Network (Forge America), Frisco, TX | 870,000 |
| The North Georgia Conference of the United Methodist Church, Atlanta, GA | 1,167,200 |
| North Park University, Chicago, IL | 1,250,000 |
| NSMBC Community Outreach Mission, Inc. (New Sunny Mount Missionary Baptist Church Community Outreach Mission, Inc.), St. Louis, MO | 1,249,655 |
| Old Town Community Church, Alexandria, VA | 1,243,648 |
| Pentecostal Theological Seminary – A Church of God Ministry, Cleveland, TN | 1,250,000 |
| Plant With Purpose, San Diego, CA | 1,240,803 |
| Presbyterian College, Clinton, SC | 1,249,500 |
| Southeastern Baptist Theological Seminary, Wake Forest, NC | 1,250,000 |
| The Telos Group, Inc., Washington, DC | 1,250,000 |
| Union City Church Inc, Brunswick, GA | 1,246,390 |
| Viterbo College, La Crosse, WI | 1,221,122 |
| Sustainability | |
| (15 grants ranging from \$387,033 to \$1million) | 11,326,192 |
| Belmont University, Nashville, TN | 500,000 |
| Catholic Church Extension Society of the United States of America (Catholic Extension), Chicago, IL | 1,000,000 |
| Catholic Leadership Institute, Malvern, PA | 1,000,000 |
| Emmanuel Gospel Center, Inc., Dorchester, MA | 999,887 |
| Evangelical Lutheran Church in America, Chicago, IL | 477,280 |
| Greater New Jersey Annual Conference of the United Methodist Church, Neptune, NJ | 750,000 |
| Latin American Bible Institute College, La Puente, CA | 764,995 |
| Leadership Foundations, Tacoma, WA | 1,000,000 |
| Lexington Theological Seminary, Lexington, KY | 500,000 |
| North Carolina Conference of the United Methodist Church, Garner, NC | 387,033 |
| Scottsboro Cumberland Presbyterian Church, Scottsboro, AL | 949,997 |
| Seattle Presbytery, Seattle, WA | 500,000 |
| Vanguard University of Southern California, Costa Mesa, CA | 1,000,000 |
| Vibrant Faith Ministries, Ellendale, MN | 500,000 |
| Wesleyan Church Corporation, Fishers, IN | 997,000 |

Thriving in Ministry Initiative

Initiative to support programs that help pastors thrive in congregational leadership and enhance the vitality of the congregations they serve

| | |
|--|------------|
| (14 grants ranging from \$361,874 to \$500,000 to support efforts to sustain programs; one \$5,629,250 grant to Duke University to support a coordination program of the initiative) | 12,359,374 |
| Benedictine Women of Madison Inc., Middleton, WI | 500,000 |
| Catawba College, Salisbury, NC | 500,000 |
| CBF of North Carolina, Inc., Winston-Salem, NC | 368,250 |
| Cooperative Baptist Fellowship Inc., Decatur, GA | 500,000 |
| Duke University, Durham, NC | 5,629,250 |
| Episcopal Diocese of Spokane, Inc., Spokane, WA | 500,000 |
| Gustavus Adolphus College, St. Peter, MN | 500,000 |
| Illinois Conference of the United Church of Christ, Westchester, IL | 500,000 |
| Marquette University, Milwaukee, WI | 361,874 |
| Massachusetts Baptist Multicultural Ministries, Inc., Lowell, MA | 500,000 |
| Milligan University (Milligan College), Milligan College, TN | 500,000 |
| Moravian Church Northern Province, Bethlehem, PA | 500,000 |
| North American Baptist Seminary (Kairos University), Sioux Falls, SD | 500,000 |
| Southern New England Conference of the United Church of Christ, Framingham, MA | 500,000 |
| Westmont College, Santa Barbara, CA | 500,000 |

Total

| | |
|--------------------------|-------------|
| Religion Division Grants | 808,936,765 |
|--------------------------|-------------|

Grand Total—All Divisions 2,396,545,825

| | |
|---|------------|
| Matching Grants—staff, retiree and Board giving | 16,708,088 |
|---|------------|

| | |
|---------------------------|---------------|
| Total—All Grants Approved | 2,413,253,913 |
|---------------------------|---------------|

*Reconciliation to Financial Statements

To reconcile the total of all grants approved with the financial statements, the following adjustments for conditional grants, decommitments and refunds must be made.

| | |
|-------------|--------------|
| Adjustments | (30,296,841) |
|-------------|--------------|

| | |
|---------------------------|---------------|
| Net Total—Grants Approved | 2,382,957,072 |
|---------------------------|---------------|